

Angiotensin-L1 Polyclonal Antibody

Description

Product type	Primary Antibody
Code	BT-AP00442
Host	Rabbit
Isotype	IgG
Size	20ul, 50ul, 100ul
Immunogen	The antiserum was produced against synthesized peptide derived from human AMOTL1. AA range:441-490
Mol wt	106574
Species reactivity	Human, Mouse
Clonality	Polyclonal
Recommended application	IHC-p, ELISA
Concentration	1 mg/ml
Full name	Angiotensin-L1 Antibody
Synonyms	AMOTL1; Angiotensin-like protein 1

This product is for research use only, not for use in human, therapeutic or diagnostic procedure.

Background

Angiotensin-like protein 1 encoded by AMOTL1 is a peripheral membrane protein that is a component of tight junctions or TJs. TJs form an apical junctional structure and act to control paracellular permeability and maintain cell polarity. This protein is related to angiotensin, an angiotensin binding protein that regulates endothelial cell migration and capillary formation. Two transcript variants encoding different isoforms have been found for this gene.

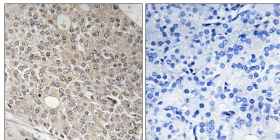
Recommended Dilution

IHC: 1: 100 - 1: 300

ELISA: 1: 10000

Not yet tested in other applications.

Images



Immunohistochemistry analysis of paraffin-embedded human prostate carcinoma tissue, using AMOTL1 Antibody. The picture on the right is blocked with the synthesized peptide.

Storage

-20°C for one year