

HDAC5/9(Phospho Ser259/220) Polyclonal Antibody

Description

Product type	Primary Antibody
Code	BT-AP00844
Host	Rabbit
Isotype	IgG
Size	100ul, 50ul, 20ul
Immunogen	The antiserum was produced against synthesized peptide derived from human HDAC5 around the phosphorylation site of Ser259. AA range:225-274
Mol wt	121992
Species reactivity	Human, Mouse
Clonality	Polyclonal
Recommended application	WB, IHC-p, IF, ELISA
Concentration	1 mg/ml
Full name	Histone deacetylase 5/9
Synonyms	Histone deacetylase 5/9; HDAC5; KIAA0600; Histone deacetylase 5; HD5; Antigen NY-CO-9; HDAC9; HDAC7; HDAC7B; HDRP; KIAA0744; MITR; Histone deacetylase 9; HD9; Histone deacetylase 7B; HD7; HD7b; Histone deacetylase-related protein; MEF2-interacting transcription rep

This product is for research use only, not for use in human, therapeutic or diagnostic procedure.

Background

Histones play a critical role in transcriptional regulation, cell cycle progression, and developmental events. Histone acetylation/deacetylation alters chromosome structure and affects transcription factor access to DNA. The protein encoded by this gene belongs to the class II histone deacetylase/acuc/apha family. It possesses histone deacetylase activity and represses transcription when tethered to a promoter. It coimmunoprecipitates only with HDAC3 family member and might form multicomplex proteins. It also interacts with myocyte enhancer factor-2 (MEF2) proteins, resulting in repression of MEF2-dependent genes. This gene is thought to be associated with colon cancer. Two transcript variants encoding different isoforms have been found for this gene.

Recommended Dilution

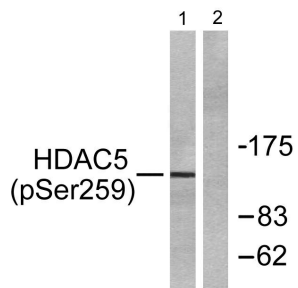
WB: 1: 500 - 1: 2000

IHC-p: 1: 100 - 1: 300

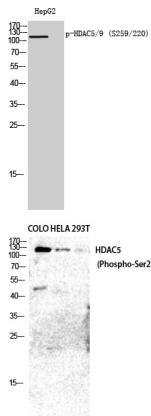
ELISA: 1: 10000

Not yet tested in other applications.

Images



Western Blot analysis of HepG2 cells using Phospho-HDAC5/9 (S259/220) Polyclonal Antibody diluted at 1:2000



Western Blot analysis of COLO HELA 293T cells using Phospho-HDAC5/9 (S259/220) Polyclonal Antibody diluted at 1:2000

Western blot analysis of lysates from HepG2 cells, using HDAC5 (Phospho-Ser259) Antibody. The lane on the right is blocked with the phospho peptide.

Storage

-20°C for 1 year

501 Changsheng S Rd, Nanhu Dist, Jiaxing, Zhejiang, China

Tel: 86 21 31007137 | E-mail: save@bt-laboratory.com | www.bt-laboratory.com