

Casein Kinase II Alpha Polyclonal Antibody

Description

Product type	Primary Antibody
Code	BT-AP01178
Host	Rabbit
Isotype	IgG
Size	20ul, 50ul, 100ul
Immunogen	The antiserum was produced against synthesized peptide derived from human Casein Kinase II alpha. AA range:221-270
Mol wt	45144
Species reactivity	Human, Mouse, Rat
Clonality	Polyclonal
Recommended application	WB, IHC-p, ELISA
Concentration	1 mg/ml
Full name	Casein Kinase IIalpha Antibody
Synonyms	CSNK2A1; CK2A1; Casein kinase II subunit alpha; CK II alpha

This product is for research use only, not for use in human, therapeutic or diagnostic procedure.

Background

Casein kinase II is a serine/threonine protein kinase that phosphorylates acidic proteins such as casein. It is involved in various cellular processes, including cell cycle control, apoptosis, and circadian rhythm. The kinase exists as a tetramer and is composed of an alpha, an alpha-prime, and two beta subunits. The alpha subunits contain the catalytic activity while the beta subunits undergo autophosphorylation. The protein (casein kinase 2 alpha 1) encoded by CSNK2A1 represents the alpha subunit. While CSNK2A1 is found on chromosome 20, a related transcribed pseudogene is found on chromosome 11. Three transcript variants encoding two different proteins have been found for CSNK2A1.

Recommended Dilution

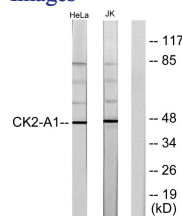
WB: 1: 500 - 1: 2000

IHC: 1: 100 - 1: 300

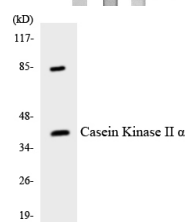
ELISA: 1: 10000

Not yet tested in other applications.

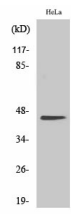
Images



Western blot analysis of lysates from HeLa and Jurkat cells, using Casein Kinase II alpha Antibody. The lane on the right is blocked with the synthesized peptide.



Western blot analysis of the lysates from 293 cells using Casein Kinase II alpha antibody.



Western Blot analysis of various cells using Casein Kinase II α Polyclonal Antibody cells nucleus.

Storage

-20°C for one year

501 Changsheng S Rd, Nanhu Dist, Jiaxing, Zhejiang, China

Tel: 86 21 31007137 | E-mail: save@bt-laboratory.com | www.bt-laboratory.com