

Cdk1/2/3 Polyclonal Antibody

Description

Product type	Primary Antibody
Code	BT-AP01617
Host	Rabbit
Isotype	IgG
Size	20ul, 50ul, 100ul
Immunogen	The antiserum was produced against synthesized peptide derived from human CDK1/CDC2. AA range:1-50
Mol wt	33930
Species reactivity	Human, Mouse, Rat
Clonality	Polyclonal
Recommended application	WB, ELISA
Concentration	1 mg/ml
Full name	Cdk1/2/3 Antibody
Synonyms	CDK1; CDC2; CDC28A; CDKN1; P34CDC2; Cyclin-dependent kinase 1; CDK1; Cell division control protein 2 homolog; Cell division protein kinase 1; p34 protein kinase; CDK2; CDKN2; Cyclin-dependent kinase 2

This product is for research use only, not for use in human, therapeutic or diagnostic procedure.

Background

CDK2 encodes a member of a family of serine/threonine protein kinases that participate in cell cycle regulation. Cyclin dependent kinase 2 is the catalytic subunit of the cyclin-dependent protein kinase complex, which regulates progression through the cell cycle. Activity of this protein is especially critical during the G1 to S phase transition. This protein associates with and regulated by other subunits of the complex including cyclin A or E, CDK inhibitor p21Cip1 (CDKN1A), and p27Kip1 (CDKN1B). Alternative splicing results in multiple transcript variants.

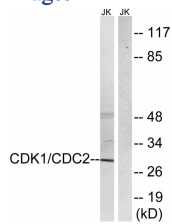
Recommended Dilution

WB: 1: 500 - 1: 2000

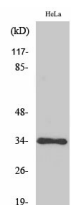
ELISA: 1: 5000

Not yet tested in other applications.

Images



Western blot analysis of lysates from HepG2 cells, treated with Forskolin 40nM 30', using CDK1/CDC2 Antibody. The lane on the right is blocked with the synthesized peptide.



Western Blot analysis of various cells using Cdk1/2/3 Polyclonal Antibody

Storage

-20°C for one year

501 Changsheng S Rd, Nanhu Dist, Jiaxing, Zhejiang, China

Tel: 86 21 31007137 | E-mail: save@bt-laboratory.com | www.bt-laboratory.com