

## c-Fos Polyclonal Antibody

### Description

<b>Product type</b>	Primary Antibody
<b>Code</b>	BT-AP01731
<b>Host</b>	Rabbit
<b>Isotype</b>	IgG
<b>Size</b>	20ul, 50ul, 100ul
<b>Immunogen</b>	Recombinant Protein of Proto-oncogene c-Fos
<b>Mol wt</b>	40695
<b>Species reactivity</b>	Human, Mouse, Rat
<b>Clonality</b>	Polyclonal
<b>Recommended application</b>	WB
<b>Concentration</b>	1 mg/ml
<b>Full name</b>	c-Fos Antibody
<b>Synonyms</b>	FOS; G0S7; Proto-oncogene c-Fos; Cellular oncogene fos; G0/G1 switch regulatory protein 7

**This product is for research use only, not for use in human, therapeutic or diagnostic procedure.**

### Background

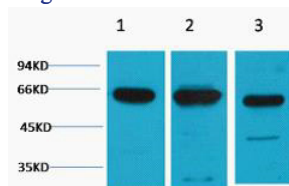
The Fos gene family consists of 4 members: fOS, FOSB, FOSL1, and FOSL2. These genes encode leucine zipper proteins that can dimerize with proteins of the JUN family, thereby forming the transcription factor complex AP-1. As such, the FOS proteins have been implicated as regulators of cell proliferation, differentiation, and transformation. In some cases, expression of the FOS gene has also been associated with apoptotic cell death.

### Recommended Dilution

WB: 1: 1000 - 2000

Not yet tested in other applications.

### Images



Western blot analysis of 1) HeLa, 2) Mouse Brain, 3) Rat Brain tissue, diluted at 1:2000. Secondary antibody was diluted at 1:20000 cells nucleus.

### Storage

-20°C for one year

501 Changsheng S Rd, Nanhu Dist, Jiaxing, Zhejiang, China

Tel: 86 21 31007137 | E-mail: [save@bt-laboratory.com](mailto:save@bt-laboratory.com) | [www.bt-laboratory.com](http://www.bt-laboratory.com)