

Cleaved-Factor XII HC (I20) Polyclonal Antibody

Description

Product type	Primary Antibody
Code	BT-AP01925
Host	Rabbit
Isotype	IgG
Size	20ul, 50ul, 100ul
Immunogen	The antiserum was produced against synthesized peptide derived from human FA12. AA range:1-50
Mol wt	67818
Species reactivity	Human
Clonality	Polyclonal
Recommended application	WB, IHC-p, ELISA
Concentration	1 mg/ml
Full name	Cleaved-Factor XII HC (I20) Antibody
Synonyms	F12; Coagulation factor XII; Hageman factor; HAF

This product is for research use only, not for use in human, therapeutic or diagnostic procedure.

Background

F12 encodes coagulation factor XII which circulates in blood as a zymogen. This single chain zymogen is converted to a two-chain serine protease with an heavy chain (alpha-factor XIIa) and a light chain. The heavy chain contains two fibronectin-type domains, two epidermal growth factor (EGF)-like domains, a kringle domain and a proline-rich domain, whereas the light chain contains only a catalytic domain. On activation, further cleavages takes place in the heavy chain, resulting in the production of beta-factor XIIa light chain and the alpha-factor XIIa light chain becomes beta-factor XIIa heavy chain. Prekallikrein is cleaved by factor XII to form kallikrein, which then cleaves factor XII first to alpha-factor XIIa and then to beta-factor XIIa. The active factor XIIa participates in the initiation of blood coagulation, fibrinolysis, and the generation of bradykinin and angiotensin. It activates coagulation factors VII and XI. Defects in this gene do not cause any clinical symptoms and the sole effect is that whole-blood clotting time is prolonged.

Recommended Dilution

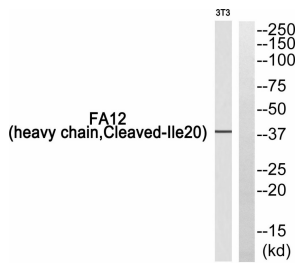
WB: 1: 500 - 1: 2000

IHC: 1: 100 - 1: 300

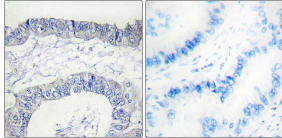
ELISA: 1: 20000

Not yet tested in other applications.

Images



Western blot analysis of FA12 (heavy chain, Cleaved-Ile20) Antibody. The lane on the right is blocked with the FA12 (heavy chain, Cleaved-Ile20) peptide.



Immunohistochemistry analysis of paraffin-embedded human lung carcinoma, using FA12 (heavy chain, Cleaved-Ile20) Antibody. The lane on the right is blocked with the FA12 (heavy chain, Cleaved-Ile20) peptide.

Storage

-20°C for one year

501 Changsheng S Rd, Nanhu Dist, Jiaxing, Zhejiang, China

Tel: 86 21 31007137 | E-mail: save@bt-laboratory.com | www.bt-laboratory.com