

Eme1 Polyclonal Antibody

Description

Product type	Primary Antibody
Code	BT-AP02934
Host	Rabbit
Isotype	IgG
Size	20ul, 50ul, 100ul
Immunogen	Synthesized peptide derived from Eme1 . at AA range: 250-330
Mol wt	63252
Species reactivity	Human
Clonality	Polyclonal
Recommended application	WB, ELISA
Concentration	1 mg/ml
Full name	Eme1 Antibody
Synonyms	EME1; MMS4; Crossover junction endonuclease EME1; MMS4 homolog; hMMS4

This product is for research use only, not for use in human, therapeutic or diagnostic procedure.

Background

EME1 encodes essential meiotic structure-specific endonuclease 1 that complexes with methyl methanesulfonate-sensitive UV-sensitive 81 protein to form an endonuclease complex. The encoded protein interacts with specific DNA structures including nicked Holliday junctions, 3'-flap structures and aberrant replication fork structures. This protein may be involved in repairing DNA damage and in maintaining genomic stability. Alternative splicing results in multiple transcript variants.

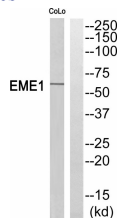
Recommended Dilution

WB: 1: 500 - 1: 2000

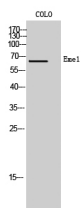
ELISA: 1: 5000

Not yet tested in other applications.

Images



Western blot analysis of EME1 Antibody. The lane on the right is blocked with the EME1 peptide.



Western Blot analysis of COLO cells using Eme1 Polyclonal Antibody cells nucleus.

Storage

-20°C for one year

501 Changsheng S Rd, Nanhu Dist, Jiaxing, Zhejiang, China

Tel: 86 21 31007137 | E-mail: save@bt-laboratory.com | www.bt-laboratory.com