

Frizzled-10 Polyclonal Antibody

Description

Product type	Primary Antibody
Code	BT-AP03356
Host	Rabbit
Isotype	IgG
Size	20ul, 50ul, 100ul
Immunogen	The antiserum was produced against synthesized peptide derived from the N-terminal region of human FZD10. AA range:31-80
Mol wt	65336
Species reactivity	Human, Mouse
Clonality	Polyclonal
Recommended application	WB, IHC-p, ELISA
Concentration	1 mg/ml
Full name	Frizzled-10 Antibody
Synonyms	FZD10; Frizzled-10; Fz-10; hFz10; FzE7; CD350

This product is for research use only, not for use in human, therapeutic or diagnostic procedure.

Background

FZD10 is a member of the frizzled gene family. Members of this family encode 7-transmembrane domain proteins that are receptors for the Wnt/Wingless type MMTV integration site family of signaling proteins. Most frizzled receptors are coupled to the beta-catenin canonical signaling pathway. Using array analysis, expression of this intronless gene is significantly up-regulated in two cases of primary colon cancer.

Recommended Dilution

WB: 1: 500 - 1: 2000

IHC-p: 1: 100 - 300

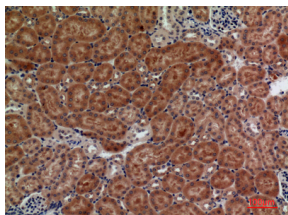
ELISA: 1: 20000

Not yet tested in other applications.

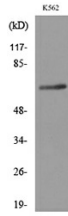
Images



Western Blot analysis of K562 cells using Frizzled-10 Polyclonal Antibody. Secondary antibody was diluted at 1:20000



Immunohistochemical analysis of paraffin-embedded mouse-kidney, antibody was diluted at 1:100



Western blot analysis of lysate from K562 cells, using FZD10 Antibody.

Storage

-20°C for one year

501 Changsheng S Rd, Nanhu Dist, Jiaxing, Zhejiang, China

Tel: 86 21 31007137 | E-mail: save@bt-laboratory.com | www.bt-laboratory.com