

Frizzled-3 Polyclonal Antibody

Description

Product type	Primary Antibody
Code	BT-AP03359
Host	Rabbit
Isotype	IgG
Size	20ul, 50ul, 100ul
Immunogen	The antiserum was produced against synthesized peptide derived from human FZD3. AA range:141-190
Mol wt	76263
Species reactivity	Human, Mouse
Clonality	Polyclonal
Recommended application	WB, IF, ELISA
Concentration	1 mg/ml
Full name	Frizzled-3 Antibody
Synonyms	FZD3; Frizzled-3; Fz-3; hFz3

This product is for research use only, not for use in human, therapeutic or diagnostic procedure.

Background

FZD3 is a member of the frizzled gene family. Members of this family encode seven-transmembrane domain proteins that are receptors for the wingless type MMTV integration site family of signaling proteins. Most frizzled receptors are coupled to the beta-catenin canonical signaling pathway. The function of Frizzled-3 is unknown, although it may play a role in mammalian hair follicle development. Alternative splicing results in multiple transcript variants. FZD3 is a susceptibility locus for schizophrenia.

Recommended Dilution

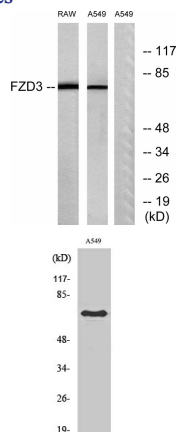
WB: 1: 500 - 1: 2000

IF: 1: 200 - 1: 1000

ELISA: 1: 10000

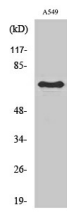
Not yet tested in other applications.

Images

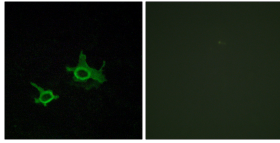


Western blot analysis of lysates from A549 and RAW264.7 cells, using FZD3 Antibody. The lane on the right is blocked with the synthesized peptide.

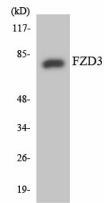
Western Blot analysis of RAW264.7 cells using Frizzled-3 Polyclonal Antibody



Western Blot analysis of various cells using Frizzled-3 Polyclonal Antibody



Immunofluorescence analysis of COS7 cells, using FZD3 Antibody. The picture on the right is blocked with the synthesized peptide.



Western blot analysis of the lysates from HeLa cells using FZD3 antibody.

Storage

-20°C for one year

501 Changsheng S Rd, Nanhu Dist, Jiaxing, Zhejiang, China

Tel: 86 21 31007137 | E-mail: save@bt-laboratory.com | www.bt-laboratory.com