

MCCB Rabbit Polyclonal Antibody

Description

Product type	Primary Antibody
Code	BT-AP03558
Host	Rabbit
Isotype	IgG
Size	100ul, 50ul, 20ul
Immunogen	Synthesized peptide derived from human MCCB
Mol wt	N/A
Species reactivity	Human, Mouse, Rat
Clonality	Polyclonal
Recommended application	WB
Concentration	1 mg/ml
Full name	MCCB
Synonyms	MCCB; Methylcrotonyl-CoA carboxylase beta chain; mitochondrial; MCCase subunit beta; EC 6.4.1.4; 3-methylcrotonyl-CoA carboxylase 2; 3-methylcrotonyl-CoA carboxylase non-biotin-containing subunit; 3-methylcrotonyl-CoA:carbon dioxide ligase subunit beta

This product is for research use only, not for use in human, therapeutic or diagnostic procedure.

Background

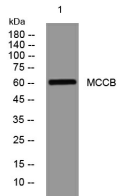
This gene encodes the small subunit of 3-methylcrotonyl-CoA carboxylase. This enzyme functions as a heterodimer and catalyzes the carboxylation of 3-methylcrotonyl-CoA to form 3-methylglutaconyl-CoA. Mutations in this gene are associated with 3-Methylcrotonylglycinuria| an autosomal recessive disorder of leucine catabolism.

Recommended Dilution

WB: 1: 500 - 1: 2000

Not yet tested in other applications.

Images



Western blot analysis of lysates from 3T3 cells, primary antibody was diluted at 1:1000, 4°C overnight

Storage

-20°C for 1 year