

## HMP19 Polyclonal Antibody

### Description

<b>Product type</b>	Primary Antibody
<b>Code</b>	BT-AP04150
<b>Host</b>	Rabbit
<b>Isotype</b>	IgG
<b>Size</b>	20ul, 50ul, 100ul
<b>Immunogen</b>	The antiserum was produced against synthesized peptide derived from human NSG2. AA range:33-82
<b>Mol wt</b>	19085
<b>Species reactivity</b>	Human, Mouse
<b>Clonality</b>	Polyclonal
<b>Recommended application</b>	IHC-p, WB, ELISA
<b>Concentration</b>	1 mg/ml
<b>Full name</b>	HMP19 Antibody
<b>Synonyms</b>	NSG2; Neuron-specific protein family member 2; Protein p19; Hmp19

**This product is for research use only, not for use in human, therapeutic or diagnostic procedure.**

### Background

The chondroitin sulfate proteoglycan NG2 is a type I membrane protein expressed by subpopulations of glia including oligodendroglial precursor cells and a variety of tumor cells. Normal precursor cells and malignant tumor cells migrate and proliferate, but there is evidence that cells may not be able to engage in both activities at the same time. However, NG2 is involved in promoting both proliferation and motility. The extracellular domain of NG2 sequesters growth factors and binds to both growth factor receptors and extracellular matrix ligands such as fibronectin, collagens and laminin. The cytoplasmic domain is involved in activating Rac, Cdc42 and p130 Cas. PKC $\alpha$  phosphorylates NG2 at Thr2256, triggering the redistribution of NG2 from apical microprocesses to lamellipodia accompanied by enhanced cell motility. ERK phosphorylates NG2 at Thr2314, stimulating cell proliferation.

### Recommended Dilution

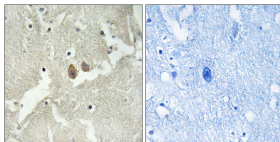
WB: 1: 500 - 2000

ELISA: 1: 20000

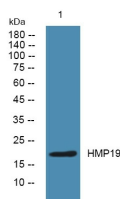
IHC: 1: 100 - 1: 300

Not yet tested in other applications.

### Images



Immunohistochemistry analysis of paraffin-embedded human brain tissue, using NSG2 Antibody. The picture on the right is blocked with the synthesized peptide.



Western blot analysis of lysates from DU145 cells, primary antibody was diluted at 1:1000, 4 $^{\circ}$  over night

## Storage

-20°C for one year

501 Changsheng S Rd, Nanhu Dist, Jiaxing, Zhejiang, China

Tel: 86 21 31007137 | E-mail: [save@bt-laboratory.com](mailto:save@bt-laboratory.com) | [www.bt-laboratory.com](http://www.bt-laboratory.com)