

IRS-1 Polyclonal Antibody

Description

Product type	Primary Antibody
Code	BT-AP04643
Host	Rabbit
Isotype	IgG
Size	20ul, 50ul, 100ul
Immunogen	The antiserum was produced against synthesized peptide derived from human IRS-1. AA range:289-338
Mol wt	131591
Species reactivity	Human, Mouse, Rat
Clonality	Polyclonal
Recommended application	IHC-p, IF, ELISA
Concentration	1 mg/ml
Full name	IRS-1 Antibody
Synonyms	IRS1; Insulin receptor substrate 1; IRS-1

This product is for research use only, not for use in human, therapeutic or diagnostic procedure.

Background

IRS1 encodes a protein which is phosphorylated by insulin receptor tyrosine kinase. Mutations in this gene are associated with type II diabetes and susceptibility to insulin resistance.

Recommended Dilution

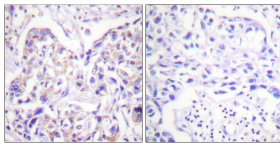
IHC: 1: 100 - 1: 300

IF: 1: 200 - 1: 1000

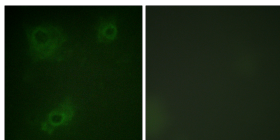
ELISA: 1: 5000

Not yet tested in other applications.

Images



Immunohistochemistry analysis of paraffin-embedded human breast carcinoma tissue, using IRS-1 Antibody. The picture on the right is blocked with the synthesized peptide.



Immunofluorescence analysis of COS7 cells, using IRS-1 Antibody. The picture on the right is blocked with the synthesized peptide.

Storage

-20°C for one year