

Malic enzyme 1 Polyclonal Antibody

Description

Product type	Primary Antibody
Code	BT-AP05192
Host	Rabbit
Isotype	IgG
Size	20ul, 50ul, 100ul
Immunogen	The antiserum was produced against synthesized peptide derived from human ME1. AA range:468-517
Mol wt	64150
Species reactivity	Human, Mouse, Rat
Clonality	Polyclonal
Recommended application	WB, ELISA
Concentration	1 mg/ml
Full name	Malic enzyme 1 Antibody
Synonyms	ME1; NADP-dependent malic enzyme; NADP-ME; Malic enzyme 1

This product is for research use only, not for use in human, therapeutic or diagnostic procedure.

Background

ME1 encodes a cytosolic, NADP-dependent enzyme that generates NADPH for fatty acid biosynthesis. The activity of this enzyme, the reversible oxidative decarboxylation of malate, links the glycolytic and citric acid cycles. The regulation of expression for ME1 is complex. Increased expression can result from elevated levels of thyroid hormones or by higher proportions of carbohydrates in the diet.

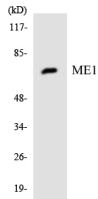
Recommended Dilution

WB: 1: 500 - 1: 2000

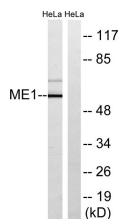
ELISA: 1: 40000

Not yet tested in other applications.

Images



Western blot analysis of the lysates from HeLa cells using ME1 antibody.



Western blot analysis of lysates from HeLa cells, using ME1 Antibody. The lane on the right is blocked with the synthesized peptide.

Storage

-20°C for one year

