

MYLK Polyclonal Antibody

Description

Product type	Primary Antibody
Code	BT-AP05707
Host	Rabbit
Isotype	IgG
Size	20ul, 50ul, 100ul
Immunogen	The antiserum was produced against synthesized peptide derived from human MYLK. AA range:1701-1750
Mol wt	210774
Species reactivity	Human, Mouse, Rat
Clonality	Polyclonal
Recommended application	WB, ELISA
Concentration	1 mg/ml
Full name	MYLK Antibody
Synonyms	MYLK; MLCK; MLCK1; MYLK1; Myosin light chain kinase; smooth muscle; MLCK; smMLCK; Kinase-related protein; KRP; Telokin

This product is for research use only, not for use in human, therapeutic or diagnostic procedure.

Background

MYLK, a muscle member of the immunoglobulin gene superfamily, encodes myosin light chain kinase which is a calcium/calmodulin dependent enzyme. This kinase phosphorylates myosin regulatory light chains to facilitate myosin interaction with actin filaments to produce contractile activity. MYLK encodes both smooth muscle and nonmuscle isoforms. In addition, using a separate promoter in an intron in the 3' region, it encodes telokin, a small protein identical in sequence to the C-terminus of myosin light chain kinase, that is independently expressed in smooth muscle and functions to stabilize unphosphorylated myosin filaments. A pseudogene is located on the p arm of chromosome 3. Four transcript variants that produce four isoforms of the calcium/calmodulin dependent enzyme have been identified as well as two transcripts that produce two isoforms of telokin. Additional variants have been identified but lack full length transcripts.

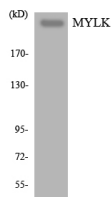
Recommended Dilution

WB: 1: 500 - 1: 2000

ELISA: 1: 5000

Not yet tested in other applications.

Images



Western blot analysis of the lysates from HT-29 cells using MYLK antibody.

Storage

-20°C for one year

