

## Neurensin-1 Polyclonal Antibody

### Description

<b>Product type</b>	Primary Antibody
<b>Code</b>	BT-AP05917
<b>Host</b>	Rabbit
<b>Isotype</b>	IgG
<b>Size</b>	20ul, 50ul, 100ul
<b>Immunogen</b>	The antiserum was produced against synthesized peptide derived from human NRSN1. AA range:121-170
<b>Mol wt</b>	21475
<b>Species reactivity</b>	Human, Mouse, Rat
<b>Clonality</b>	Polyclonal
<b>Recommended application</b>	WB, IHC-p, ELISA
<b>Concentration</b>	1 mg/ml
<b>Full name</b>	Neurensin-1 Antibody
<b>Synonyms</b>	NRSN1; VMP; Neurensin-1; Neuro-p24; Vesicular membrane protein of 24 kDa; Vesicular membrane protein p24

This product is for research use only, not for use in human, therapeutic or diagnostic procedure.

### Background

NRSN1 is a Protein Coding gene. Neurensin-1 may play an important role in neural organelle transport, and in transduction of nerve signals or in nerve growth. May play a role in neurite extension. May play a role in memory consolidation. Diseases associated with NRSN1 include louse-borne relapsing fever. An important paralog of this gene is NRSN2.

### Recommended Dilution

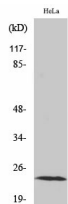
WB: 1: 500 - 1: 2000

IHC: 1: 100 - 1: 300

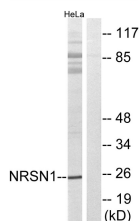
ELISA: 1: 40000

Not yet tested in other applications.

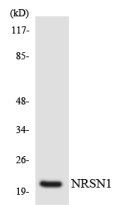
### Images



Western Blot analysis of various cells using Neurensin-1 Polyclonal Antibody



Western blot analysis of lysates from HeLa cells, using NRSN1 Antibody. The lane on the right is blocked with the synthesized peptide.



Western blot analysis of the lysates from 293 cells using NRSN1 antibody.

### Storage

-20°C for one year

501 Changsheng S Rd, Nanhu Dist, Jiaxing, Zhejiang, China

Tel: 86 21 31007137 | E-mail: [save@bt-laboratory.com](mailto:save@bt-laboratory.com) | [www.bt-laboratory.com](http://www.bt-laboratory.com)