

NRBF-2 Polyclonal Antibody

Description

Product type	Primary Antibody
Code	BT-AP06167
Host	Rabbit
Isotype	IgG
Size	20ul, 50ul, 100ul
Immunogen	The antiserum was produced against synthesized peptide derived from human NRBF2. AA range:140-189
Mol wt	32378
Species reactivity	Human, Mouse, Rat
Clonality	Polyclonal
Recommended application	WB, ELISA
Concentration	1 mg/ml
Full name	NRBF-2 Antibody
Synonyms	NRBF2; COPR; Nuclear receptor-binding factor 2; NRBF-2; Comodulator of PPAR and RXR

This product is for research use only, not for use in human, therapeutic or diagnostic procedure.

Background

NRBF2 (Nuclear Receptor Binding Factor 2) is a Protein Coding gene. Among its related pathways are Gene Expression and Nuclear Receptor transcription pathway.

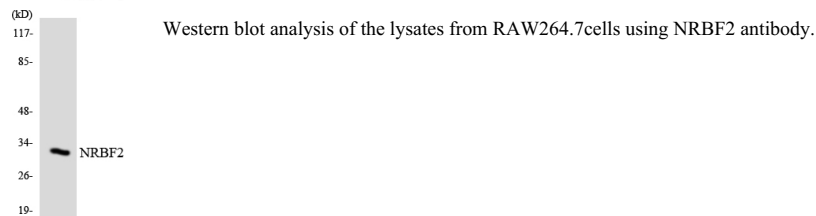
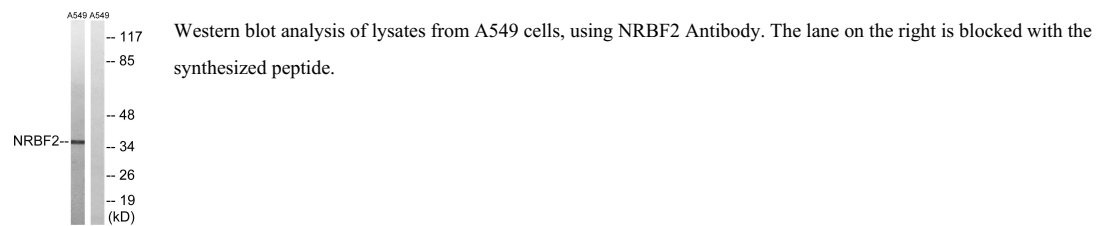
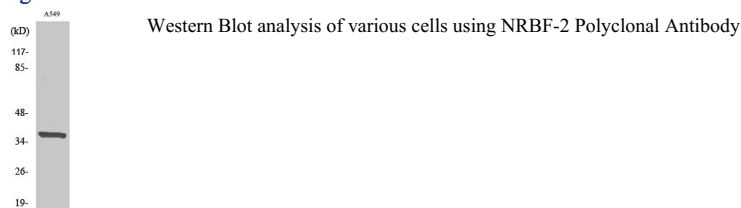
Recommended Dilution

WB: 1: 500 - 1: 2000

ELISA: 1: 20000

Not yet tested in other applications.

Images



Storage

-20°C for one year

501 Changsheng S Rd, Nanhu Dist, Jiaxing, Zhejiang, China

Tel: 86 21 31007137 | E-mail: save@bt-laboratory.com | www.bt-laboratory.com