

PI 3-Kinase p110 Gamma Polyclonal Antibody

Description

Product type	Primary Antibody
Code	BT-AP07137
Host	Rabbit
Isotype	IgG
Size	20ul, 50ul, 100ul
Immunogen	The antiserum was produced against synthesized peptide derived from human PIK3CG. AA range:881-930
Mol wt	126454
Species reactivity	Human
Clonality	Polyclonal
Recommended application	WB, IHC-p, ELISA
Concentration	1 mg/ml
Full name	PI 3-Kinase p110gamma Antibody
Synonyms	PIK3CG; Phosphatidylinositol 4; 5-bisphosphate 3-kinase catalytic subunit gamma isoform; PI3-kinase subunit gamma; PI3K-gamma; PI3Kgamma; PtdIns-3-kinase subunit gamma; Phosphatidylinositol 4,5-bispho

This product is for research use only, not for use in human, therapeutic or diagnostic procedure.

Background

Phosphoinositide 3-kinases (PI3Ks) phosphorylate inositol lipids and are involved in the immune response. The protein encoded by PIK3CG (phosphatidylinositol-4,5-bisphosphate 3-kinase catalytic subunit gamma) is a class I catalytic subunit of PI3K. Like other class I catalytic subunits (p110-alpha p110-beta, and p110-delta), the encoded protein binds a p85 regulatory subunit to form PI3K. This gene is located in a commonly deleted segment of chromosome 7 previously identified in myeloid leukemias. Several transcript variants encoding the same protein have been found for PIK3CG.

Recommended Dilution

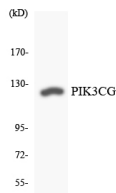
WB: 1: 500 - 1: 2000

IHC: 1: 100 - 1: 300

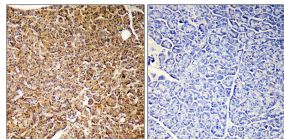
ELISA: 1: 40000

Not yet tested in other applications.

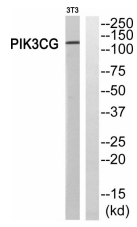
Images



Western blot analysis of the lysates from Jurkat cells using PIK3CG antibody.



Immunohistochemistry analysis of paraffin-embedded human pancreas, using PIK3CG Antibody. The lane on the right is blocked with the PIK3CG peptide.



Western blot analysis of PIK3CG Antibody. The lane on the right is blocked with the PIK3CG peptide.

Storage

-20°C for one year

501 Changsheng S Rd, Nanhu Dist, Jiaxing, Zhejiang, China

Tel: 86 21 31007137 | E-mail: save@bt-laboratory.com | www.bt-laboratory.com