

## CD151 Polyclonal Antibody

### Description

|                         |  |
|-------------------------|--|
| Product type            | Primary Antibody   |
| Code                    | BT-AP07276   |
| Host                    | Rabbit   |
| Isotype                 | IgG  |
| Size                    | 20ul, 50ul, 100ul  |
| Immunogen               | Synthetic peptide from human protein at AA range: 91-140   |
| Mol wt                  | N/A  |
| Species reactivity      | Human, Mouse, Rat  |
| Clonality               | Polyclonal   |
| Recommended application | IHC-p, IF, ELISA   |
| Concentration           | 1 mg/ml  |
| Full name               | CD151 antigen  |
| Synonyms                | CD151 antigen ;GP27;Membrane glycoprotein SFA-1;Platelet-endothelial tetraspan antigen 3;PETA-3;Tetraspanin-24;Tspan-24;CD antigen CD151; CD151 antigen; GP27; Membrane glycoprotein SFA-1; Platelet-endothelial tetraspan antigen 3; PETA-3; Tetraspanin-24; Tspan-24; CD antigen CD151 |

**This product is for research use only, not for use in human, therapeutic or diagnostic procedure.**

### Background

The protein encoded by this gene is a member of the transmembrane 4 superfamily, also known as the tetraspanin family. Most of these members are cell-surface proteins that are characterized by the presence of four hydrophobic domains. The proteins mediate signal transduction events that play a role in the regulation of cell development, activation, growth and motility. This encoded protein is a cell surface glycoprotein that is known to complex with integrins and other transmembrane 4 superfamily proteins. It is involved in cellular processes including cell adhesion and may regulate integrin trafficking and/or function. This protein enhances cell motility, invasion and metastasis of cancer cells. Multiple alternatively spliced transcript variants that encode the same protein have been described for this gene.

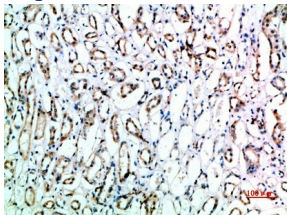
### Recommended Dilution

IHC-p: 1: 50 - 1: 200

ELISA: 1: 10000 - 1: 20000

Not yet tested in other applications.

### Images



Immunohistochemical analysis of paraffin-embedded human-kidney, antibody was diluted at 1:200

### Storage

-20°C for 1 year