

RFC3 Polyclonal Antibody

Description

Product type	Primary Antibody
Code	BT-AP07771
Host	Rabbit
Isotype	IgG
Size	20ul, 50ul, 100ul
Immunogen	The antiserum was produced against synthesized peptide derived from human RFC3. AA range:178-227
Mol wt	40556
Species reactivity	Human, Mouse, Rat
Clonality	Polyclonal
Recommended application	WB, IHC-p, ELISA
Concentration	1 mg/ml
Full name	RFC3 Antibody
Synonyms	RFC3; Replication factor C subunit 3; Activator 1 38 kDa subunit; A1 38 kDa subunit; Activator 1 subunit 3; Replication factor C 38 kDa subunit; RF-C 38 kDa subunit; RFC38

This product is for research use only, not for use in human, therapeutic or diagnostic procedure.

Background

The elongation of primed DNA templates by DNA polymerase delta and DNA polymerase epsilon requires the accessory proteins proliferating cell nuclear antigen (PCNA) and replication factor C (RFC). RFC, also named activator 1, is a protein complex consisting of five distinct subunits of 140, 40, 38, 37, and 36 kDa. RFC3 encodes the 38 kDa subunit. This subunit is essential for the interaction between the 140 kDa subunit and the core complex that consists of the 36, 37, and 40 kDa subunits. Alternatively spliced transcript variants encoding distinct isoforms have been described.

Recommended Dilution

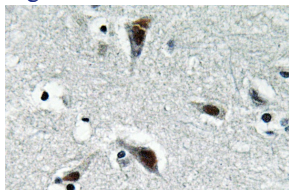
WB: 1: 500 - 1: 2000

IHC: 1: 100 - 1: 300

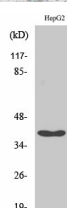
ELISA: 1: 40000

Not yet tested in other applications.

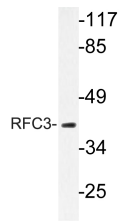
Images



Immunohistochemistry analysis of RFC3 antibody in paraffin-embedded human brain tissue.



Western Blot analysis of various cells using RFC3 Polyclonal Antibody cells nucleus.



Western blot analysis of lysate from HepG2 cells, using RFC3 antibody.

Storage

-20°C for one year

501 Changsheng S Rd, Nanhu Dist, Jiaxing, Zhejiang, China

Tel: 86 21 31007137 | E-mail: save@bt-laboratory.com | www.bt-laboratory.com