

SOD-1 Polyclonal Antibody

Description

Product type	Primary Antibody
Code	BT-AP08448
Host	Rabbit
Isotype	IgG
Size	20ul, 50ul, 100ul
Immunogen	The antiserum was produced against synthesized peptide derived from human SOD-1. AA range:36-85
Mol wt	15936
Species reactivity	Human, Mouse, Rat
Clonality	Polyclonal
Recommended application	WB, ELISA
Concentration	1 mg/ml
Full name	SOD-1 Antibody
Synonyms	SOD1; Superoxide dismutase [Cu-Zn]; Superoxide dismutase 1; hSod1

This product is for research use only, not for use in human, therapeutic or diagnostic procedure.

Background

Superoxide dismutase [Cu-Zn] encoded by SOD1 binds copper and zinc ions and is one of two isozymes responsible for destroying free superoxide radicals in the body. The encoded isozyme is a soluble cytoplasmic protein, acting as a homodimer to convert naturally-occurring but harmful superoxide radicals to molecular oxygen and hydrogen peroxide. The other isozyme is a mitochondrial protein. Mutations in this gene have been implicated as causes of familial amyotrophic lateral sclerosis. Rare transcript variants have been reported for this gene.

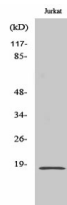
Recommended Dilution

WB: 1: 500 - 1: 2000

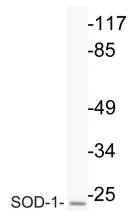
ELISA: 1: 10000

Not yet tested in other applications.

Images



Western Blot analysis of various cells using SOD-1 Polyclonal Antibody diluted at 1:1000



Western blot analysis of lysate from Jurkat cells, using SOD-1 antibody.

Storage

-20°C for one year

501 Changsheng S Rd, Nanhu Dist, Jiaxing, Zhejiang, China

Tel: 86 21 31007137 | E-mail: save@bt-laboratory.com | www.bt-laboratory.com