

## SR-4 Polyclonal Antibody

### Description

<b>Product type</b>	Primary Antibody
<b>Code</b>	BT-AP08540
<b>Host</b>	Rabbit
<b>Isotype</b>	IgG
<b>Size</b>	20ul, 50ul, 100ul
<b>Immunogen</b>	The antiserum was produced against synthesized peptide derived from human HTR4. AA range:141-190
<b>Mol wt</b>	43761
<b>Species reactivity</b>	Human, Rat
<b>Clonality</b>	Polyclonal
<b>Recommended application</b>	WB, IF, ELISA
<b>Concentration</b>	1 mg/ml
<b>Full name</b>	SR-4 Antibody
<b>Synonyms</b>	HTR4; 5-hydroxytryptamine receptor 4; 5-HT-4; 5-HT4; Serotonin receptor 4

**This product is for research use only, not for use in human, therapeutic or diagnostic procedure.**

### Background

HTR4 is a member of the family of serotonin receptors, which are G protein coupled receptors that stimulate cAMP production in response to serotonin (5-hydroxytryptamine). The gene product is a glycosylated transmembrane protein that functions in both the peripheral and central nervous system to modulate the release of various neurotransmitters. Multiple transcript variants encoding proteins with distinct C-terminal sequences have been described.

### Recommended Dilution

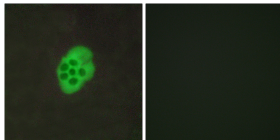
WB: 1: 500 - 1: 2000

IF: 1: 200 - 1: 1000

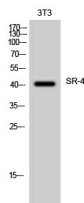
ELISA: 1: 10000

Not yet tested in other applications.

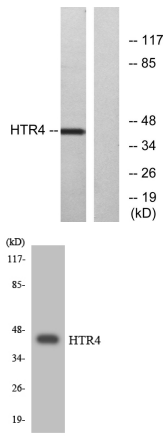
### Images



Immunofluorescence analysis of MCF7 cells, using HTR4 Antibody. The picture on the right is blocked with the synthesized peptide.



Western Blot analysis of 3T3 cells using SR-4 Polyclonal Antibody



Western blot analysis of lysates from NIH/3T3 cells, using HTR4 Antibody. The lane on the right is blocked with the synthesized peptide.

Western blot analysis of the lysates from HepG2 cells using HTR4 antibody.

### Storage

-20°C for one year

501 Changsheng S Rd, Nanhu Dist, Jiaxing, Zhejiang, China

Tel: 86 21 31007137 | E-mail: [save@bt-laboratory.com](mailto:save@bt-laboratory.com) | [www.bt-laboratory.com](http://www.bt-laboratory.com)