

EphA2/3/4(Phospho Tyr588/596) Polyclonal Antibody

Description

Product type	Primary Antibody
Code	BT-AP08890
Host	Rabbit
Isotype	IgG
Size	20ul, 50ul, 100ul
Immunogen	The antiserum was produced against synthesized peptide derived from human EPHA2/3 around the phosphorylation site of Tyr588/596. AA range:556-605
Mol wt	108254;110131;109860
Species reactivity	Human, Mouse, Rat
Clonality	Polyclonal
Recommended application	WB, IF, ICC, ELISA
Concentration	1 mg/ml
Full name	Ephrin type-A receptor 2/3/4
Synonyms	Ephrin type-A receptor 2/3/4; EPHA2; ECK; Ephrin type-A receptor 2; Epithelial cell kinase; Tyrosine-protein kinase receptor ECK; EPHA3; ETK; ETK1; HEK; TYRO4; Ephrin type-A receptor 3; EPH-like kinase 4; EK4; hEK4; HEK; Human embryo kinase; Tyrosine-protein kinase TYRO

This product is for research use only, not for use in human, therapeutic or diagnostic procedure.

Background

This gene belongs to the ephrin receptor subfamily of the protein-tyrosine kinase family. EPH and EPH-related receptors have been implicated in mediating developmental events, particularly in the nervous system. Receptors in the EPH subfamily typically have a single kinase domain and an extracellular region containing a Cys-rich domain and 2 fibronectin type III repeats. The ephrin receptors are divided into 2 groups based on the similarity of their extracellular domain sequences and their affinities for binding ephrin-A and ephrin-B ligands. This gene encodes a protein that binds ephrin-A ligands. Mutations in this gene are the cause of certain genetically-related cataract disorders.

Recommended Dilution

WB: 1: 500 - 1: 2000

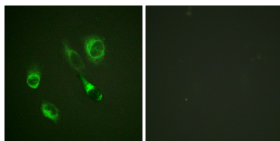
IF: 1: 200 - 1: 1000

ICC: 1: 200 - 1: 1000

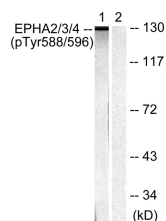
ELISA: 1: 20000

Not yet tested in other applications.

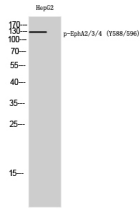
Images



Immunofluorescence analysis of HeLa cells, using EPHA2/3 (Phospho-Tyr588/596) Antibody. The picture on the right is blocked with the phospho peptide.



Western Blot analysis of HepG2 cells using Phospho-EphA2/3/4 (Y588/596) Polyclonal Antibody



Western blot analysis of lysates from HepG2 cells, using EPHA2/3 (Phospho-Tyr588/596) Antibody.
The lane on the right is blocked with the phospho peptide.

Storage

-20°C for 1 year

501 Changsheng S Rd, Nanhu Dist, Jiaxing, Zhejiang, China

Tel: 86 21 31007137 | E-mail: save@bt-laboratory.com | www.bt-laboratory.com