

## Tubulin Alpha (Acetyl Lys352) Polyclonal Antibody

### Description

<b>Product type</b>	Primary Antibody
<b>Code</b>	BT-AP09290
<b>Host</b>	Rabbit
<b>Isotype</b>	IgG
<b>Size</b>	20ul, 50ul, 100ul
<b>Immunogen</b>	The antiserum was produced against synthesized Acetyl-peptide derived from human TUBA1B around the Acetylation site of Lys352. AA range:311-360
<b>Mol wt</b>	50136/50152/49895/49960/49924/50094
<b>Species reactivity</b>	Human, Mouse, Rat
<b>Clonality</b>	Polyclonal
<b>Recommended application</b>	WB, ELISA
<b>Concentration</b>	1 mg/ml
<b>Full name</b>	Tubulin alpha (Acetyl Lys352) Antibody
<b>Synonyms</b>	TUBA1A; TUBA3; Tubulin alpha-1A chain; Alpha-tubulin 3; Tubulin B-alpha-1; Tubulin alpha-3 chain; TUBA1B; Tubulin alpha-1B chain; Alpha-tubulin ubiquitous; Tubulin K-alpha-1; Tubulin alpha-ubiquitous

**This product is for research use only, not for use in human, therapeutic or diagnostic procedure.**

### Background

Microtubules of the eukaryotic cytoskeleton perform essential and diverse functions and are composed of a heterodimer of alpha and beta tubulins. The genes encoding these microtubule constituents belong to the tubulin superfamily, which is composed of six distinct families. Genes from the alpha, beta and gamma tubulin families are found in all eukaryotes. The alpha and beta tubulins represent the major components of microtubules, while gamma tubulin plays a critical role in the nucleation of microtubule assembly. There are multiple alpha and beta tubulin genes, which are highly conserved among species. TUBA1A encodes alpha tubulin and is highly similar to the mouse and rat Tuba1 genes. Northern blotting studies have shown that TUBA1A expression is predominantly found in morphologically differentiated neurologic cells. TUBA1A is one of three alpha-tubulin genes in a cluster on chromosome 12q. Mutations in TUBA1A cause lissencephaly type 3 (LIS3) - a neurological condition characterized by microcephaly, mental retardation, and early-onset epilepsy and caused by defective neuronal migration. Alternative splicing results in multiple transcript variants encoding distinct isoforms.

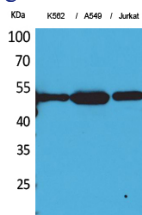
### Recommended Dilution

WB: 1: 500 - 1: 2000

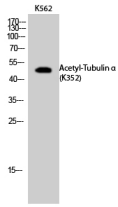
ELISA: 1: 20000

Not yet tested in other applications.

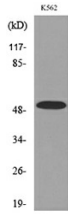
### Images



Western Blot analysis of K562, A549, Jurkat cells using Acetyl-Tubulin  $\alpha$  (K352) Polyclonal Antibody. Secondary antibody was diluted at 1:20000



Western Blot analysis of K562 cells using Acetyl-Tubulin  $\alpha$  (K352) Polyclonal Antibody. Secondary antibody was diluted at 1:20000



Western blot analysis of lysate from K562 cells, using TUBA1B (Acetyl-Lys352) Antibody.

### Storage

-20°C for one year

501 Changsheng S Rd, Nanhu Dist, Jiaxing, Zhejiang, China

Tel: 86 21 31007137 | E-mail: [save@bt-laboratory.com](mailto:save@bt-laboratory.com) | [www.bt-laboratory.com](http://www.bt-laboratory.com)