

## ZnT-1 Polyclonal Antibody

### Description

<b>Product type</b>	Primary Antibody
<b>Code</b>	BT-AP09748
<b>Host</b>	Rabbit
<b>Isotype</b>	IgG
<b>Size</b>	20ul, 50ul, 100ul
<b>Immunogen</b>	The antiserum was produced against synthesized peptide derived from human SLC30A1. AA range:201-250
<b>Mol wt</b>	55328
<b>Species reactivity</b>	Human
<b>Clonality</b>	Polyclonal
<b>Recommended application</b>	WB, IHC-p, ELISA
<b>Concentration</b>	1 mg/ml
<b>Full name</b>	ZnT-1 Antibody
<b>Synonyms</b>	SLC30A1; ZNT1; Zinc transporter 1; ZnT-1; Solute carrier family 30 member 1

This product is for research use only, not for use in human, therapeutic or diagnostic procedure.

### Background

SLC30A1 (Solute Carrier Family 30 Member 1) is a Protein Coding gene. Among its related pathways are Mineral absorption and Metal ion SLC transporters. GO annotations related to this gene include cation transmembrane transporter activity and calcium channel inhibitor activity. An important paralog of this gene is SLC30A4.

### Recommended Dilution

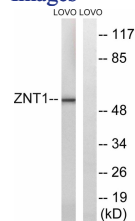
WB: 1: 500 - 1: 2000

IHC: 1: 100 - 1: 300

ELISA: 1: 5000

Not yet tested in other applications.

### Images



Western blot analysis of lysates from LOVO cells, using SLC30A1 Antibody. The lane on the right is blocked with the synthesized peptide.

### Storage

-20°C for one year