

## HPLN1 Polyclonal Antibody

### Description

Product type	Primary Antibody
Code	BT-AP10148
Host	Rabbit
Isotype	IgG
Size	20ul, 50ul, 100ul
Immunogen	Synthesized peptide derived from part region of human protein
Mol wt	N/A
Species reactivity	Human, Mouse, Rat
Clonality	Polyclonal
Recommended application	WB, ELISA
Concentration	1 mg/ml
Full name	Hyaluronan and proteoglycan link protein 1
Synonyms	Hyaluronan and proteoglycan link protein 1 ;Cartilage-linking protein 1;Cartilage-link protein;Proteoglycan link protein

This product is for research use only, not for use in human, therapeutic or diagnostic procedure.

### Background

Stabilizes the aggregates of proteoglycan monomers with hyaluronic acid in the extracellular cartilage matrix.,Belongs to the HAPLN family.,Contains 1 Ig-like V-type (immunoglobulin-like) domain.,Contains 2 Link domains.,tissue specificity:Widely expressed. Weakly expressed in the brain.,

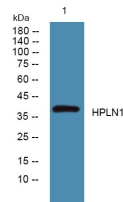
### Recommended Dilution

WB: 1: 500 - 1: 2000

ELISA: 1: 5000 - 1: 20000

Not yet tested in other applications.

### Images



Western blot analysis of lysates from SH-SY5Y cells, primary antibody was diluted at 1:1000, 4°C overnight

### Storage

-20°C for 1 year