

MLRS Polyclonal Antibody

Description

Product type	Primary Antibody
Code	BT-AP11384
Host	Rabbit
Isotype	IgG
Size	20ul, 50ul, 100ul
Immunogen	Synthesized peptide derived from human protein . at AA range: 70-150
Mol wt	N/A
Species reactivity	Human, Mouse, Rat
Clonality	Polyclonal
Recommended application	WB, ELISA
Concentration	1 mg/ml
Full name	Myosin regulatory light chain 2, skeletal muscle isoform
Synonyms	Myosin regulatory light chain 2, skeletal muscle isoform ;Fast skeletal myosin light chain 2;MLC2B

This product is for research use only, not for use in human, therapeutic or diagnostic procedure.

Background

miscellaneous:This chain binds calcium.,Contains 3 EF-hand domains.,subunit:Myosin is an hexamer of 2 heavy chains and 4 light chains.,tissue specificity:Expressed in fetal and adult skeletal muscle.,

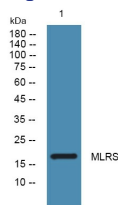
Recommended Dilution

WB: 1: 500 - 1: 2000

ELISA: 1: 5000 - 1: 20000

Not yet tested in other applications.

Images



Western blot analysis of lysates from U2OS cells, primary antibody was diluted at 1:1000, 4°C overnight

Storage

-20°C for 1 year