

NM23A Rabbit Polyclonal Antibody

Description

Product type	Primary Antibody
Code	BT-AP11912
Host	Rabbit
Isotype	IgG
Size	20ul, 50ul, 100ul
Immunogen	Recombinant Protein of NM23A of NME1
Mol wt	N/A
Species reactivity	Human, Rat, Mouse
Clonality	Polyclonal
Recommended application	IHC-p, IF
Concentration	1 mg/ml
Full name	NME1
Synonyms	NME1; NME1

This product is for research use only, not for use in human, therapeutic or diagnostic procedure.

Background

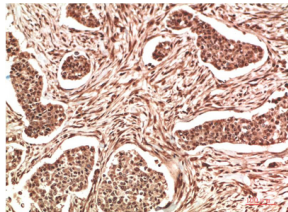
This gene (NME1) was identified because of its reduced mRNA transcript levels in highly metastatic cells. Nucleoside diphosphate kinase (NDK) exists as a hexamer composed of 'A' (encoded by this gene) and 'B' (encoded by NME2) isoforms. Mutations in this gene have been identified in aggressive neuroblastomas. Two transcript variants encoding different isoforms have been found for this gene. Co-transcription of this gene and the neighboring downstream gene (NME2) generates naturally-occurring transcripts (NME1-NME2), which encodes a fusion protein comprised of sequence sharing identity with each individual gene product.

Recommended Dilution

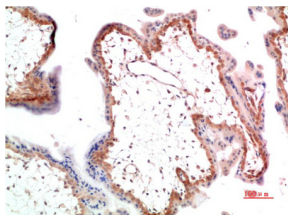
IHC: 1: 100 - 1: 200

Not yet tested in other applications.

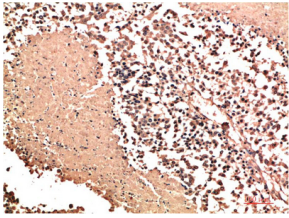
Images



Immunohistochemical analysis of paraffin-embedded Human Lung Carcinoma Tissue using NM23A Rabbit pAb diluted at 1:500.



Immunohistochemical analysis of paraffin-embedded Human Stomach Carcinoma Tissue using NM23A Rabbit pAb diluted at 1:500.



Immunohistochemical analysis of paraffin-embedded Human Placenta Tissue using NM23A Rabbit pAb diluted at 1:500.

Storage

-20°C for 1 year

501 Changsheng S Rd, Nanhu Dist, Jiaxing, Zhejiang, China

Tel: 86 21 31007137 | E-mail: save@bt-laboratory.com | www.bt-laboratory.com