

POK20 Rabbit Polyclonal Antibody

Description

Product type	Primary Antibody
Code	BT-AP12050
Host	Rabbit
Isotype	IgG
Size	100ul, 50ul, 20ul
Immunogen	Synthesized peptide derived from human POK20
Mol wt	N/A
Species reactivity	Human, Rat, Mouse
Clonality	Polyclonal
Recommended application	WB
Concentration	1 mg/ml
Full name	POK20
Synonyms	POK20; HERV-K_3q27.3 provirus ancestral Pol protein [Includes: Reverse transcriptase; RT; EC 2.7.7.49; Ribonuclease H; RNase H; EC 3.1.26.4; Integrase; IN;

This product is for research use only, not for use in human, therapeutic or diagnostic procedure.

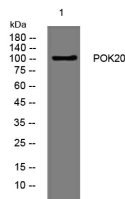
Background

Recommended Dilution

WB: 1: 500 - 1: 2000

Not yet tested in other applications.

Images



Western blot analysis of lysates from Jarkat cells, primary antibody was diluted at 1:1000, 4°C overnight

Storage

-20°C for 1 year

501 Changsheng S Rd, Nanhu Dist, Jiaxing, Zhejiang, China

Tel: 86 21 31007137 | E-mail: save@bt-laboratory.com | www.bt-laboratory.com