

Rac1/cdc42(Phospho-Ser71) Rabbit Polyclonal Antibody

Description

Product type	Primary Antibody
Code	BT-AP12225
Host	Rabbit
Isotype	IgG
Size	20ul, 50ul, 100ul
Immunogen	Synthesized phospho peptide around human Rac1 (Ser71)
Mol wt	N/A
Species reactivity	Human, Rat, Mouse
Clonality	Polyclonal
Recommended application	WB
Concentration	1 mg/ml
Full name	Rac1/cdc42
Synonyms	Rac1/cdc42 ;Ser71; Cell division control protein 42 homolog; G25K GTP-binding protein

This product is for research use only, not for use in human, therapeutic or diagnostic procedure.

Background

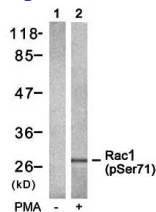
The protein encoded by this gene is a small GTPase of the Rho-subfamily| which regulates signaling pathways that control diverse cellular functions including cell morphology| migration| endocytosis and cell cycle progression. This protein is highly similar to *Saccharomyces cerevisiae* Cdc 42| and is able to complement the yeast *cdc42-1* mutant. The product of oncogene Dbl was reported to specifically catalyze the dissociation of GDP from this protein. This protein could regulate actin polymerization through its direct binding to Neural Wiskott-Aldrich syndrome protein (N-WASP)| which subsequently activates Arp2/3 complex. Alternative splicing of this gene results in multiple transcript variants. Pseudogenes of this gene have been identified on chromosomes 3| 4| 5| 7| 8 and 20.

Recommended Dilution

WB: 1: 1000 - 1: 2000

Not yet tested in other applications.

Images



Western blot analysis of Rac1(Phospho-Ser71) antibody in 293 cells lysates, cell treated or untreated with PMA 125ng/ml 30', 4°C overnight, secondary antibody was diluted at 1:10000, 37°C 1hour.

Storage

-20°C for 1 year