

p300 (Acetyl Lys1542) Polyclonal Antibody

Description

Product type	Primary Antibody
Code	BT-AP12630
Host	Rabbit
Isotype	IgG
Size	20ul, 50ul, 100ul
Immunogen	Synthesized acetyl-peptide derived from human p300 around the acetylation site of K1542.
Mol wt	N/A
Species reactivity	Human, Mouse, Rat
Clonality	Polyclonal
Recommended application	WB, ELISA
Concentration	1 mg/ml
Full name	Histone acetyltransferase p300
Synonyms	Histone acetyltransferase p300; EP300; P300; Histone acetyltransferase p300; p300 HAT; E1A-associated protein p300

This product is for research use only, not for use in human, therapeutic or diagnostic procedure.

Background

This gene encodes the adenovirus E1A-associated cellular p300 transcriptional co-activator protein. It functions as histone acetyltransferase that regulates transcription via chromatin remodeling and is important in the processes of cell proliferation and differentiation. It mediates cAMP-gene regulation by binding specifically to phosphorylated CREB protein. This gene has also been identified as a co-activator of HIF1A (hypoxia-inducible factor 1 alpha), and thus plays a role in the stimulation of hypoxia-induced genes such as VEGF. Defects in this gene are a cause of Rubinstein-Taybi syndrome and may also play a role in epithelial cancer.

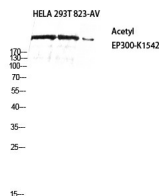
Recommended Dilution

WB: 1: 500 - 1: 2000

ELISA: 1: 10000

Not yet tested in other applications.

Images



Western blot analysis of HELA 293T 823-AV using Acetyl-p300 (K1542) antibody. Antibody was diluted at 1:2000. Secondary antibody was diluted at 1:20000

Storage

-20°C for 1 year