

YMEL1 Rabbit Polyclonal Antibody

Description

Product type	Primary Antibody
Code	BT-AP13565
Host	Rabbit
Isotype	IgG
Size	20ul, 50ul, 100ul
Immunogen	Synthesized peptide derived from human YMEL1
Mol wt	N/A
Species reactivity	Human, Mouse, Rat
Clonality	Polyclonal
Recommended application	WB
Concentration	1 mg/ml
Full name	YMEL1
Synonyms	YMEL1; ATP-dependent zinc metalloprotease YME1L1; EC 3.4.24.-; ATP-dependent metalloprotease FtsH1; Meg-4; Presenilin-associated metalloprotease; PAMP; YME1-like protein 1

This product is for research use only, not for use in human, therapeutic or diagnostic procedure.

Background

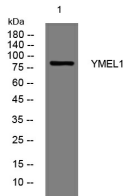
The protein encoded by this gene is the human ortholog of yeast mitochondrial AAA metalloprotease| Yme1p. It is localized in the mitochondria and can functionally complement a yme1 disruptant yeast strain. It is proposed that this gene plays a role in mitochondrial protein metabolism and could be involved in mitochondrial pathologies. Three transcript variants encoding different isoforms have been found for this gene.

Recommended Dilution

WB: 1: 500 - 1: 2000

Not yet tested in other applications.

Images



Western blot analysis of lysates from A549 cells, primary antibody was diluted at 1:1000, 4°C overnight

Storage

-20°C for 1 year