

## c-Jun Polyclonal Antibody

### Description

<b>Product type</b>	Primary Antibody
<b>Code</b>	BT-AP14547
<b>Host</b>	Rabbit
<b>Isotype</b>	IgG
<b>Size</b>	20ul, 50ul, 100ul
<b>Immunogen</b>	Recombinant Protein of c-Jun
<b>Mol wt</b>	N/A
<b>Species reactivity</b>	Human, Mouse
<b>Clonality</b>	Polyclonal
<b>Recommended application</b>	WB, IHC-p, IF
<b>Concentration</b>	1 mg/ml

### Full name

### Synonyms

This product is for research use only, not for use in human, therapeutic or diagnostic procedure.

### Background

Catalytic activity: Sucrose + ((1->6)-alpha-D-glucosyl)(n) = D-fructose + ((1->6)-alpha-D-glucosyl)(n+1)., Production of extracellular glucans, that are thought to play a key role in the development of the dental plaque because of their ability to adhere to smooth surfaces and mediate the aggregation of bacterial cells and food debris., miscellaneous: GTF-I synthesizes water-insoluble glucans (alpha 1,3-linked glucose and some 1,6 linkages), GTF-S synthesizes water-soluble glucans (alpha 1,6-glucose). GTF-SI synthesizes both forms of glucans., Belongs to the glycosyl hydrolase 70 family., Contains 11 cell wall-binding repeats.,

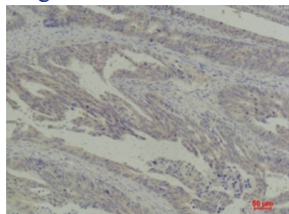
### Recommended Dilution

WB: 1: 500 - 1: 2000

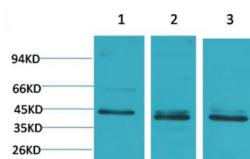
IHC: 1: 50 - 1: 200

Not yet tested in other applications.

### Images



Immunohistochemical analysis of paraffin-embedded Human Breast Carcinoma using c-Jun Rabbit pAb diluted at 1:200.



Western blot analysis of 1) 293T, 2) HeLa, 3) 3T3 with c-Jun Rabbit pAb diluted at 1:2,000.

## Storage

-20°C for 1 year

501 Changsheng S Rd, Nanhu Dist, Jiaxing, Zhejiang, China

Tel: 86 21 31007137 | E-mail: [save@bt-laboratory.com](mailto:save@bt-laboratory.com) | [www.bt-laboratory.com](http://www.bt-laboratory.com)