

PSCA Monoclonal Antibody

Description

Product type	Antibody
Code	BT-MCA2000
Host	Mouse
Isotype	Mouse IgG2a
Size	100µL, 50µL
Immunogen	Purified recombinant fragment of human PSCA (AA: 1-114) expressed in E. Coli.
Mol wt	12kDa
Species reactivity	Others
Clonality	Monoclonal
Recommended application	ICC,FCM
Concentration	N/A
Full name	N/A
Synonyms	PRO232

This product is for research use only, not for use in human, therapeutic or diagnostic procedure.

Background

This gene encodes a glycosylphosphatidylinositol-anchored cell membrane glycoprotein. In addition to being highly expressed in the prostate it is also expressed in the bladder, placenta, colon, kidney, and stomach. This gene is up-regulated in a large proportion of prostate cancers and is also detected in cancers of the bladder and pancreas. This gene includes a polymorphism that results in an upstream start codon in some individuals; this polymorphism is thought to be associated with a risk for certain gastric and bladder cancers. Alternative splicing results in multiple transcript variants.

Recommended Dilution

WB: 1:500 - 1:2000

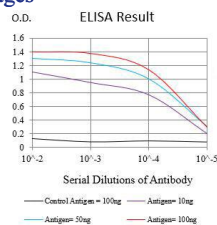
ICC: 1:200 - 1:1000

FCM: 1:200 - 1:400

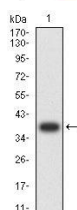
ELISA: 1:10000

Not yet tested in other applications.

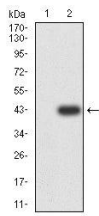
Images



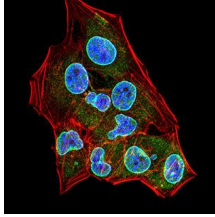
Black line: Control Antigen (100 ng);Purple line: Antigen (10ng); Blue line: Antigen (50 ng); Red line:Antigen (100 ng)



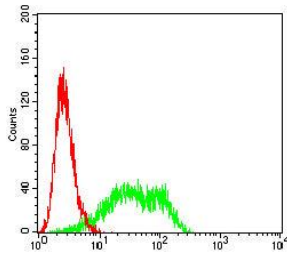
Western blot analysis using PSCA mAb against human PSCA (AA: 1-114) recombinant protein. (Expected MW is 37.8 kDa)



Western blot analysis using PSCA mAb against HEK293-6e (1) and PSCA (AA: 1-114)-hIgGFc transfected HEK293-6e (2) cell lysate.



Immunofluorescence analysis of HeLa cells using PSCA mouse mAb (green). Blue: DRAQ5 fluorescent DNA dye. Red: Actin filaments have been labeled with Alexa Fluor-555 phalloidin. Secondary antibody from Fisher (Cat#: 35503)



Flow cytometric analysis of PC-3 cells using PSCA mouse mAb (green) and negative control (red).

Storage

Store at 4°C short term. Aliquot and store at -20°C long term.

501 Changsheng S Rd, Nanhu Dist, Jiaxing, Zhejiang, China

Tel: 86 21 31007137 | E-mail: save@bt-laboratory.com | www.bt-laboratory.com