

MAPK7 Monoclonal Antibody

Description

Product type	Antibody
Code	BT-MCA2016
Host	Mouse
Isotype	Mouse IgG1
Size	100 μ L, 50 μ L
Immunogen	Purified recombinant fragment of human MAPK7 (AA: 411-556) expressed in E. Coli.
Mol wt	88.4kDa
Species reactivity	Human
Clonality	Monoclonal
Recommended application	IHC
Concentration	N/A
Full name	N/A
Synonyms	BMK1;ERK4;ERK5;PRKM7

This product is for research use only, not for use in human, therapeutic or diagnostic procedure.

Background

The protein encoded by this gene is a member of the MAP kinase family. MAP kinases act as an integration point for multiple biochemical signals, and are involved in a wide variety of cellular processes such as proliferation, differentiation, transcription regulation and development. This kinase is specifically activated by mitogen-activated protein kinase kinase 5 (MAP2K5/MEK5). It is involved in the downstream signaling processes of various receptor molecules including receptor type kinases, and G protein-coupled receptors. In response to extracellular signals, this kinase translocates to cell nucleus, where it regulates gene expression by phosphorylating, and activating different transcription factors. Four alternatively spliced transcript variants of this gene encoding two distinct isoforms have been reported.

Recommended Dilution

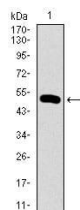
WB: 1:500 - 1:2000

IHC-p: 1:200 - 1:1000

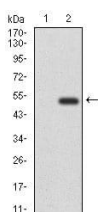
ELISA: 1:10000

Not yet tested in other applications.

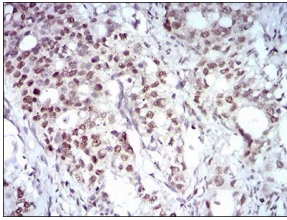
Images



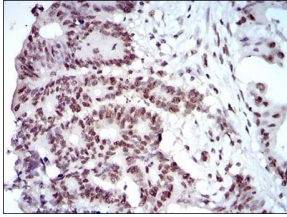
Western blot analysis using MAPK7 mAb against human MAPK7 (AA: 411-556) recombinant protein. (Expected MW is 41.8 kDa)



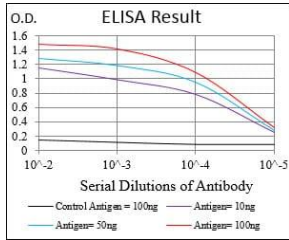
Western blot analysis using MAPK7 mAb against HEK293 (1) and MAPK7 (AA: 411-556)-hlgGfc transfected HEK293 (2) cell lysate.



Immunohistochemical analysis of paraffin-embedded cervical cancer tissues using MAPK7 mouse mAb with DAB staining.



Immunohistochemical analysis of paraffin-embedded colon cancer tissues using MAPK7 mouse mAb with DAB staining.



Black line: Control Antigen (100 ng); Purple line: Antigen(10ng); Blue line: Antigen (50 ng); Red line: Antigen (100 ng);

Storage

Store at 4°C short term. Aliquot and store at -20°C long term.

501 Changsheng S Rd, Nanhu Dist, Jiaxing, Zhejiang, China

Tel: 86 21 31007137 | E-mail: save@bt-laboratory.com | www.bt-laboratory.com