

MIB1 Monoclonal Antibody

Description

Product type	Antibody
Code	BT-MCA2045
Host	Mouse
Isotype	Mouse IgG1
Size	100µL, 50µL
Immunogen	Purified recombinant fragment of human MIB1 (AA: 6-221) expressed in E. Coli.
Mol wt	110kDa
Species reactivity	Human,Monkey
Clonality	Monoclonal
Recommended application	WB,ICC,FCM
Concentration	N/A
Full name	N/A
Synonyms	MIB;DIP1;ZZZ6;DIP-1;LVNC7;ZZANK2

This product is for research use only, not for use in human, therapeutic or diagnostic procedure.

Background

N/A

Recommended Dilution

WB: 1:500 - 1:2000

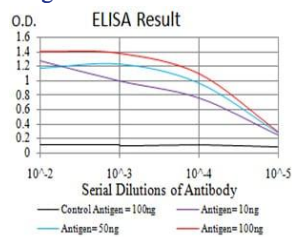
ICC: 1:200 - 1:1000

FCM: 1:200 - 1:400

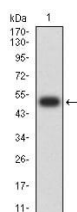
ELISA: 1:10000

Not yet tested in other applications.

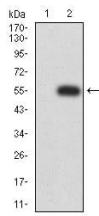
Images



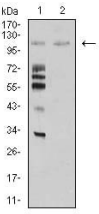
Black line: Control Antigen (100 ng);Purple line: Antigen (10ng); Blue line: Antigen (50 ng); Red line:Antigen (100 ng)



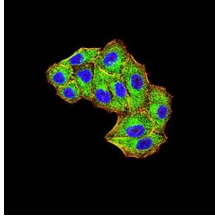
Western blot analysis using MIB1 mAb against human MIB1 (AA: 6-221) recombinant protein. (Expected MW is 50.1 kDa)



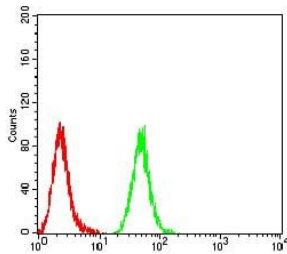
Western blot analysis using MIB1 mAb against HEK293 (1) and MIB1 (AA: 6-221)-hIgGfc transfected HEK293 (2) cell lysate.



Western blot analysis using MIB1 mouse mAb against HeLa (1) and COS7 (2) cell lysate.



Immunofluorescence analysis of HeLa cells using MIB1 mouse mAb (green). Blue: DRAQ5 fluorescent DNA dye. Red: Actin filaments have been labeled with Alexa Fluor-555 phalloidin. Secondary antibody from Fisher (Cat#: 35503)



Flow cytometric analysis of HeLa cells using MIB1 mouse mAb (green) and negative control (red).

Storage

Store at 4°C short term. Aliquot and store at -20°C long term.

501 Changsheng S Rd, Nanhu Dist, Jiaxing, Zhejiang, China

Tel: 86 21 31007137 | E-mail: save@bt-laboratory.com | www.bt-laboratory.com