

RAN Monoclonal Antibody

Description

Product type	Antibody
Code	BT-MCA2052
Host	Mouse
Isotype	Mouse IgG1
Size	100µL, 50µL
Immunogen	Purified recombinant fragment of human RAN (AA: 1-216) expressed in E. Coli.
Mol wt	24.4kDa
Species reactivity	Human,Monkey,Rat
Clonality	Monoclonal
Recommended application	WB,IHC,FCM
Concentration	N/A
Full name	N/A
Synonyms	TC4;Gsp1;ARA24

This product is for research use only, not for use in human, therapeutic or diagnostic procedure.

Background

N/A

Recommended Dilution

WB: 1:500 - 1:2000

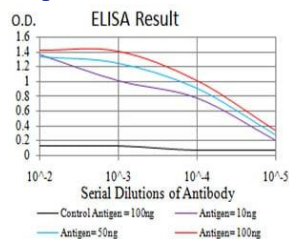
IHC-p: 1:200 - 1:1000

FCM: 1:200 - 1:400

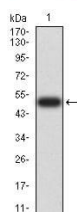
ELISA: 1:10000

Not yet tested in other applications.

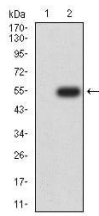
Images



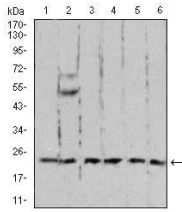
Black line: Control Antigen (100 ng);Purple line: Antigen (10ng); Blue line: Antigen (50 ng); Red line:Antigen (100 ng)



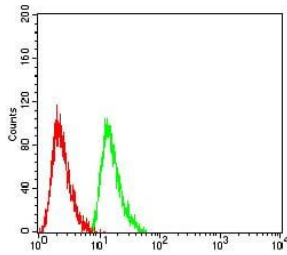
Western blot analysis using RAN mAb against human RAN (AA: 1-216) recombinant protein.
(Expected MW is 50.4 kDa)



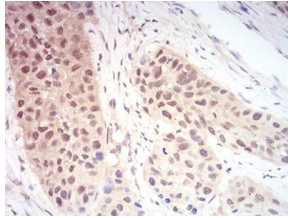
Western blot analysis using RAN mAb against HEK293 (1) and RAN (AA: 1-216)-hIgGFc transfected HEK293 (2) cell lysate.



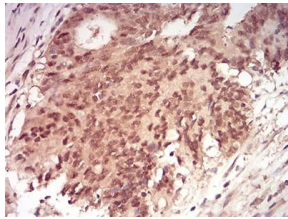
Western blot analysis using RAN mouse mAb against A431 (1), C6 (2), Jurkat (3), HeLa (4), COS7 (5), and Jurkat (6) cell lysate.



Flow cytometric analysis of HeLa cells using RAN mouse mAb (green) and negative control (red).



Immunohistochemical analysis of paraffin-embedded esophageal cancer tissues using RAN mouse mAb with DAB staining.



Immunohistochemical analysis of paraffin-embedded rectum cancer tissues using RAN mouse mAb with DAB staining.

Storage

Store at 4°C short term. Aliquot and store at -20°C long term.

501 Changsheng S Rd, Nanhu Dist, Jiaxing, Zhejiang, China

Tel: 86 21 31007137 | E-mail: save@bt-laboratory.com | www.bt-laboratory.com