

KCNN4 Monoclonal Antibody

Description

Product type	Antibody
Code	BT-MCA2056
Host	Mouse
Isotype	Mouse IgG1
Size	100µL, 50µL
Immunogen	Purified recombinant fragment of human KCNN4 (AA: extra 286-427) expressed in E. Coli.
Mol wt	47.6kDa
Species reactivity	Others
Clonality	Monoclonal
Recommended application	WB,FCM
Concentration	N/A
Full name	N/A
Synonyms	IK;IK1;SK4;DHS2;KCA4;hSK4;IKCA1;hKCa4;KCa3.1;hIKCa1

This product is for research use only, not for use in human, therapeutic or diagnostic procedure.

Background

The protein encoded by this gene is part of a potentially heterotetrameric voltage-independent potassium channel that is activated by intracellular calcium. Activation is followed by membrane hyperpolarization, which promotes calcium influx. The encoded protein may be part of the predominant calcium-activated potassium channel in T-lymphocytes. This gene is similar to other KCNN family potassium channel genes, but it differs enough to possibly be considered as part of a new subfamily.

Recommended Dilution

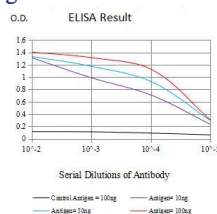
WB: 1:500 - 1:2000

FCM: 1:200 - 1:400

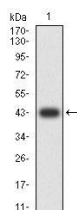
ELISA: 1:10000

Not yet tested in other applications.

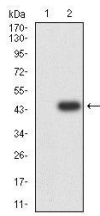
Images



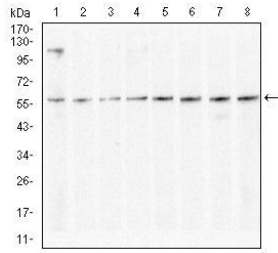
Black line: Control Antigen (100 ng); Purple line: Antigen (10ng); Blue line: Antigen (50 ng); Red line: Antigen (100 ng)



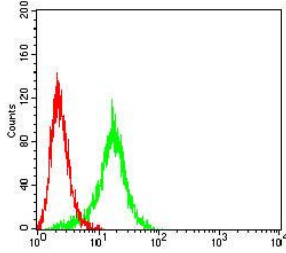
Western blot analysis using KCNN4 mAb against human KCNN4 (AA: extra 286-427) recombinant protein. (Expected MW is 42.7 kDa)



Western blot analysis using KCNN4 mAb against HEK293-6e (1) and KCNN4 (AA: extra 286-427)-hlgGfc transfected HEK293-6e (2) cell lysate.



Western blot analysis using KCNN4 mouse mAb against HepG2 (1), Jurkat (2), HeLa (3), MCF-7 (4), HEK293 (5), SW480 (6), HT-29 (7), and SW620 (8) cell lysate.



Flow cytometric analysis of THP-1 cells using KCNN4 mouse mAb (green) and negative control (red).

Storage

Store at 4°C short term. Aliquot and store at -20°C long term.

501 Changsheng S Rd, Nanhu Dist, Jiaxing, Zhejiang, China

Tel: 86 21 31007137 | E-mail: save@bt-laboratory.com | www.bt-laboratory.com