

KAT2B Monoclonal Antibody

Description

Product type	Antibody
Code	BT-MCA2069
Host	Mouse
Isotype	Mouse IgG1
Size	100µL, 50µL
Immunogen	Purified recombinant fragment of human KAT2B (AA: 1-142) expressed in E. Coli.
Mol wt	93kDa
Species reactivity	Human,Mouse,Rat,Monkey
Clonality	Monoclonal
Recommended application	IHC,ICC,FCM
Concentration	N/A
Full name	N/A
Synonyms	CAF;PCAF;P/CAF

This product is for research use only, not for use in human, therapeutic or diagnostic procedure.

Background

CBP and p300 are large nuclear proteins that bind to many sequence-specific factors involved in cell growth and/or differentiation, including c-jun and the adenoviral oncoprotein E1A. The protein encoded by this gene associates with p300/CBP. It has in vitro and in vivo binding activity with CBP and p300, and competes with E1A for binding sites in p300/CBP. It has histone acetyl transferase activity with core histones and nucleosome core particles, indicating that this protein plays a direct role in transcriptional regulation.

Recommended Dilution

WB: 1:500 - 1:2000

IHC-p: 1:200 - 1:1000

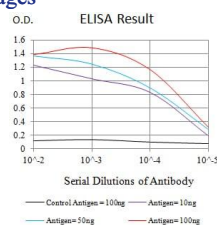
ICC: 1:200 - 1:1000

FCM: 1:200 - 1:400

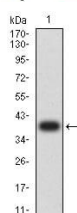
ELISA: 1:10000

Not yet tested in other applications.

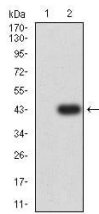
Images



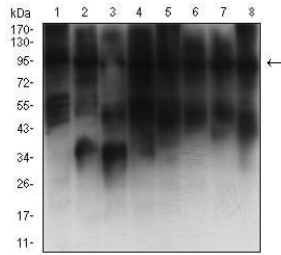
Black line: Control Antigen (100 ng);Purple line: Antigen (10ng); Blue line: Antigen (50 ng); Red line:Antigen (100 ng)



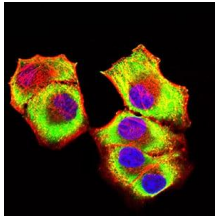
Western blot analysis using KAT2B mAb against human KAT2B (AA: 1-142) recombinant protein. (Expected MW is 39.3 kDa)



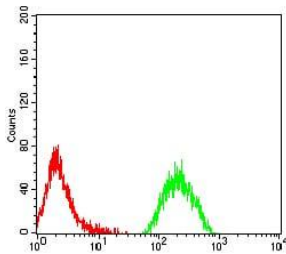
Western blot analysis using KAT2B mAb against HEK293 (1) and KAT2B (AA: 1-142)-hIgGFc transfected HEK293 (2) cell lysate.



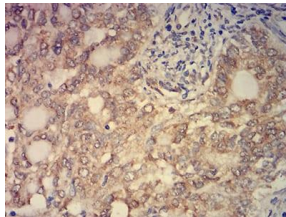
Western blot analysis using KAT2B mouse mAb against C2C12 (1), COS7 (2), HepG2 (3), HCT116 (4), A431 (5), LNCAP (6), NIH/3T3 (7), and F9 (8) cell lysate.



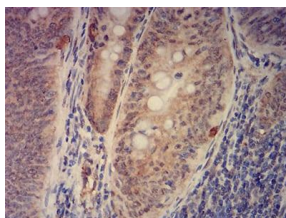
Immunofluorescence analysis of HeLa cells using KAT2B mouse mAb (green). Blue: DRAQ5 fluorescent DNA dye. Red: Actin filaments have been labeled with Alexa Fluor- 555 phalloidin. Secondary antibody from Fisher (Cat#: 35503)



Flow cytometric analysis of MOLT4 cells using KAT2B mouse mAb (green) and negative control (red).



Immunohistochemical analysis of paraffin-embedded cervical cancer tissues using KAT2B mouse mAb with DAB staining.



Immunohistochemical analysis of paraffin-embedded rectum cancer tissues using KAT2B mouse mAb with DAB staining.

Storage

Store at 4°C short term. Aliquot and store at -20°C long term.

501 Changsheng S Rd, Nanhu Dist, Jiaxing, Zhejiang, China

Tel: 86 21 31007137 | E-mail: save@bt-laboratory.com | www.bt-laboratory.com