

CD210 Monoclonal Antibody

Description

Product type	Antibody
Code	BT-MCA2075
Host	Mouse
Isotype	Mouse IgG1
Size	100µL, 50µL
Immunogen	Purified recombinant fragment of human CD210 (AA: extra 22-235)) expressed in E. Coli.
Mol wt	63kDa
Species reactivity	Others
Clonality	Monoclonal
Recommended application	ICC,FCM
Concentration	N/A
Full name	N/A
Synonyms	IL10RA;IL10R;CD210a;CDW210A;HIL-10R;IL-10R1

This product is for research use only, not for use in human, therapeutic or diagnostic procedure.

Background

The protein encoded by this gene is a receptor for interleukin 10. This protein is structurally related to interferon receptors. It has been shown to mediate the immunosuppressive signal of interleukin 10, and thus inhibits the synthesis of proinflammatory cytokines. This receptor is reported to promote survival of progenitor myeloid cells through the insulin receptor substrate-2/PI 3-kinase/AKT pathway. Activation of this receptor leads to tyrosine phosphorylation of JAK1 and TYK2 kinases. Two transcript variants, one protein-coding and the other not protein-coding, have been found for this gene.

Recommended Dilution

WB: 1:500 - 1:2000

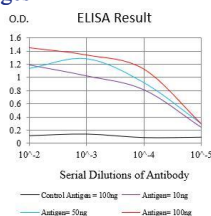
ICC: 1:25 - 1:200

FCM: 1:200 - 1:400

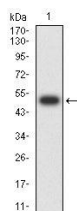
ELISA: 1:10000

Not yet tested in other applications.

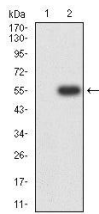
Images



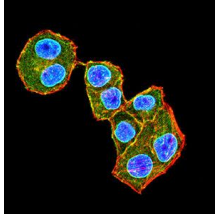
Black line: Control Antigen (100 ng);Purple line: Antigen (10ng); Blue line: Antigen (50 ng); Red line:Antigen (100 ng)



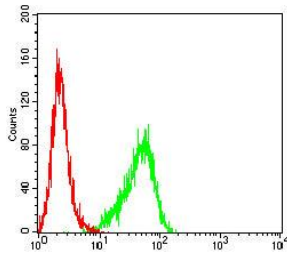
Western blot analysis using CD210 mAb against human CD210 (AA: 22-235) recombinant protein. (Expected MW is 51.3 kDa)



Western blot analysis using CD210 mAb against HEK293-6e (1) and CD210 (AA: 22-235)-hIgGFc transfected HEK293-6e (2) cell lysate.



Immunofluorescence analysis of HeLa cells using CD210 mouse mAb (green). Blue: DRAQ5 fluorescent DNA dye. Red: Actin filaments have been labeled with Alexa Fluor- 555 phalloidin. Secondary antibody from Fisher (Cat#: 35503)



Flow cytometric analysis of THP-1 cells using CD210 mouse mAb (green) and negative control (red).

Storage

Store at 4°C short term. Aliquot and store at -20°C long term.

501 Changsheng S Rd, Nanhu Dist, Jiaxing, Zhejiang, China

Tel: 86 21 31007137 | E-mail: save@bt-laboratory.com | www.bt-laboratory.com