

PAPLN Monoclonal Antibody

Description

Product type	Antibody
Code	BT-MCA2079
Host	Mouse
Isotype	Mouse IgG1
Size	100μL, 50μL
Immunogen	Purified recombinant fragment of human PAPLN (AA: 766-870) expressed in E. Coli.
Mol wt	137.7kDa
Species reactivity	Human,Mouse
Clonality	Monoclonal
Recommended application	WB,ICC
Concentration	N/A
Full name	N/A
Synonyms	Papilin

This product is for research use only, not for use in human, therapeutic or diagnostic procedure.

Background

N/A

Recommended Dilution

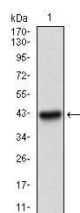
WB: 1:500 - 1:2000

ICC: 1:200 - 1:1000

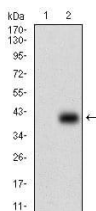
ELISA: 1:10000

Not yet tested in other applications.

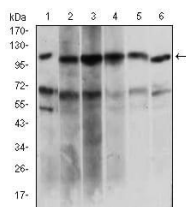
Images



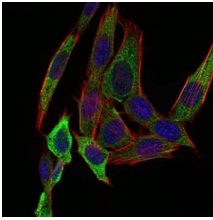
Western blot analysis using PAPLN mAb against human PAPLN recombinant protein. (Expected MW is 36.4 kDa)



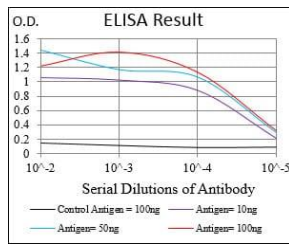
Western blot analysis using PAPLN mAb against HEK293 (1) and PAPLN (AA: 766-870)-hIgGfC transfected HEK293 (2) cell lysate.



Western blot analysis using PAPLN mouse mAb against HeLa (1), HepG2 (2), OCM-1 (3), Raji (4), Jurkat (5), NIH/3T3 (6) cell lysate.



Immunofluorescence analysis of NIH/3T3 cells using PAPLN mouse mAb (green). Blue: DRAQ5 fluorescent DNA dye. Red: Actin filaments have been labeled with Alexa Fluor-555 phalloidin.



Black line: Control Antigen (100 ng); Purple line: Antigen(10ng); Blue line: Antigen (50 ng); Red line: Antigen (100 ng);

Storage

Store at 4°C short term. Aliquot and store at -20°C long term.

501 Changsheng S Rd, Nanhu Dist, Jiaxing, Zhejiang, China

Tel: 86 21 31007137 | E-mail: save@bt-laboratory.com | www.bt-laboratory.com