

## human IgG(Fc Specific) Monoclonal Antibody

### Description

<b>Product type</b>	Antibody
<b>Code</b>	BT-MCA2082
<b>Host</b>	Mouse
<b>Isotype</b>	Mouse IgG1
<b>Size</b>	100 $\mu$ L, 50 $\mu$ L
<b>Immunogen</b>	Purified fusion protein with human IgG (Fc Specific) tag.
<b>Mol wt</b>	N/A
<b>Species reactivity</b>	Human
<b>Clonality</b>	Monoclonal
<b>Recommended application</b>	WB
<b>Concentration</b>	N/A
<b>Full name</b>	N/A
<b>Synonyms</b>	N/A

This product is for research use only, not for use in human, therapeutic or diagnostic procedure.

### Background

Specificity of antibody has been tested using Western blot, immunofluorescence, and ELISA. The product reacts with human IgG (Fc) with no significant reactivity with human IgG (Fab2), IgM or other serum proteins. We didn't test crossing with other species IgG (Fc).

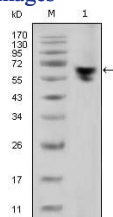
### Recommended Dilution

WB: 1:500 - 1:2000

ELISA: 1:10000

Not yet tested in other applications.

### Images



Western blot analysis using human IgG (Fc specific) mouse mAb against human serum (1).

### Storage

Store at 4°C short term. Aliquot and store at -20°C long term.