

MRPL42 Monoclonal Antibody

Description

Product type	Antibody
Code	BT-MCA2087
Host	Mouse
Isotype	Mouse IgG1
Size	100µL, 50µL
Immunogen	Purified recombinant fragment of human MRPL42 (AA: 142-203) expressed in E. Coli.
Mol wt	16.7kDa
Species reactivity	Human
Clonality	Monoclonal
Recommended application	IHC,ICC,FCM
Concentration	N/A
Full name	N/A
Synonyms	L31MT;L42MT;S32MT;MRPL31;MRPS32;PTD007;RPML31;HSPC204;MRP-L31;MRP-L42;MRP-S32

This product is for research use only, not for use in human, therapeutic or diagnostic procedure.

Background

N/A

Recommended Dilution

WB: 1:500 - 1:2000

IHC-p: 1:200 - 1:1000

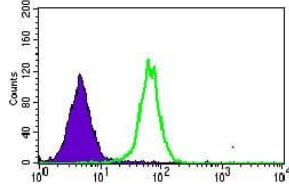
ICC: 1:300

FCM: 1:200 - 1:400

ELISA: 1:10000

Not yet tested in other applications.

Images



Flow cytometric analysis of HepG2 cells using MRPL42 mouse mAb (green) and negative control (purple).

Storage

Store at 4°C short term. Aliquot and store at -20°C long term.

501 Changsheng S Rd, Nanhu Dist, Jiaxing, Zhejiang, China

Tel: 86 21 31007137 | E-mail: save@bt-laboratory.com | www.bt-laboratory.com