

## GSK3 alpha Monoclonal Antibody

### Description

<b>Product type</b>	Antibody
<b>Code</b>	BT-MCA2102
<b>Host</b>	Mouse
<b>Isotype</b>	Mouse IgG2b
<b>Size</b>	100µL, 50µL
<b>Immunogen</b>	Purified recombinant fragment of GSK3 alpha expressed in E. Coli.
<b>Mol wt</b>	N/A
<b>Species reactivity</b>	Human
<b>Clonality</b>	Monoclonal
<b>Recommended application</b>	IHC
<b>Concentration</b>	N/A
<b>Full name</b>	N/A
<b>Synonyms</b>	DKFZp686D0638;GSK3A

This product is for research use only, not for use in human, therapeutic or diagnostic procedure.

### Background

GSK3 alpha (Glycogen synthase kinase 3 alpha), with 483-amino acid protein (about 53kDa), belongs to the Ser/Thr family of protein kinases, Cdc2/cdkx subfamily, GSK3 subclass, which also includes GSK3 beta. GSK3 is a multifunctional serine/threonine kinase that is usually inactivated by serine phosphorylation in response to extracellular cues. GSK3 is a key regulator of numerous signalling pathways, including cellular responses to Wnt, receptor tyrosine kinases and G-protein-coupled receptors and is involved in a wide range of cellular processes, ranging from glycogen metabolism to cell cycle regulation and proliferation. GSK3 alpha is implicated in the control of several regulatory proteins including glycogen synthase and transcription factors.

### Recommended Dilution

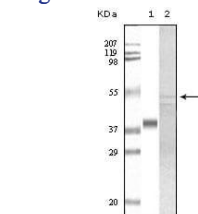
WB: 1:500 - 1:2000

IHC-p: 1:200 - 1:1000

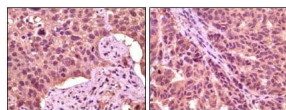
ELISA: 1:10000

Not yet tested in other applications.

### Images



Western blot analysis using GSK3 alpha mouse mAb against truncated GSK3 alpha recombinant protein (1) and A549 cell lysate (2).



Immunohistochemical analysis of paraffin-embedded human lung carcinoma (left) and skin carcinoma (right), showing cytoplasmic localization using GSK3 alpha mouse mAb with DAB staining.

### Storage

Store at 4°C short term. Aliquot and store at -20°C long term.

501 Changsheng S Rd, Nanhu Dist, Jiaxing, Zhejiang, China  
Tel: 86 21 31007137 | E-mail: [save@bt-laboratory.com](mailto:save@bt-laboratory.com) | [www.bt-laboratory.com](http://www.bt-laboratory.com)