

TACSTD2 Monoclonal Antibody

Description

Product type	Antibody
Code	BT-MCA2103
Host	Mouse
Isotype	Mouse IgG2b
Size	100µL, 50µL
Immunogen	Purified recombinant fragment of human TACSTD2 (AA: Extra(27-274)) expressed in E. Coli.
Mol wt	25.5kDa
Species reactivity	Others
Clonality	Monoclonal
Recommended application	WB,IHC,FCM
Concentration	N/A
Full name	N/A
Synonyms	EGP1;GP50;M1S1;EGP-1;TROP2;GA7331;GA733-1

This product is for research use only, not for use in human, therapeutic or diagnostic procedure.

Background

This intronless gene encodes a carcinoma-associated antigen. This antigen is a cell surface receptor that transduces calcium signals. Mutations of this gene have been associated with gelatinous drop-like corneal dystrophy.[provided by RefSeq, Dec 2009]

Recommended Dilution

WB: 1:500 - 1:2000

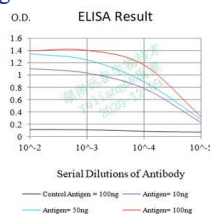
IHC-p: 1:200 - 1:1000

FCM: 1:200 - 1:400

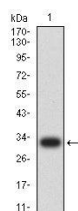
ELISA: 1:10000

Not yet tested in other applications.

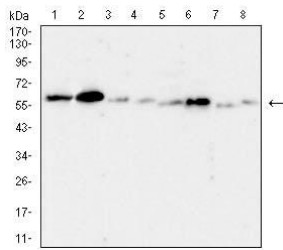
Images



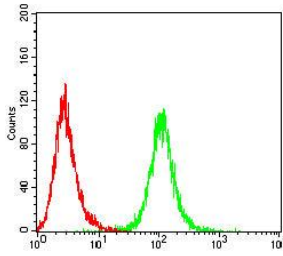
Black line: Control Antigen (100 ng);Purple line: Antigen (10ng); Blue line: Antigen (50 ng); Red line:Antigen (100 ng)



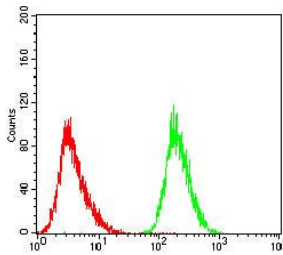
Western blot analysis using TACSTD2 mAb against human TACSTD2 (AA: Extra(27-274)) recombinant protein. (Expected MW is 30.8 kDa)



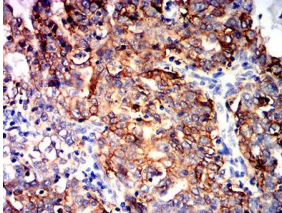
Western blot analysis using TACSTD2 mouse mAb against A431 (1), HCT116 (2), PC-3 (3), MCF-7 (4), SK-Br-3 (5), T47D (6), HEK293 (7), and HEK293-6e (8) cell lysate.



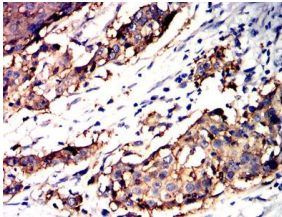
Flow cytometric analysis of BEL-7402 cells using TACSTD2 mouse mAb (green) and negative control (red).



Flow cytometric analysis of HepG2 cells using TACSTD2 mouse mAb (green) and negative control (red).



Immunohistochemical analysis of paraffin-embedded cervical cancer tissues using TACSTD2 mouse mAb with DAB staining.



Immunohistochemical analysis of paraffin-embedded esophageal cancer tissues using TACSTD2 mouse mAb with DAB staining.

Storage

Store at 4°C short term. Aliquot and store at -20°C long term.

501 Changsheng S Rd, Nanhu Dist, Jiaxing, Zhejiang, China

Tel: 86 21 31007137 | E-mail: save@bt-laboratory.com | www.bt-laboratory.com