

CALD1 Monoclonal Antibody

Description

Product type	Antibody
Code	BT-MCA2104
Host	Mouse
Isotype	Mouse IgG1
Size	100μL, 50μL
Immunogen	Purified recombinant fragment of human CALD1 (AA: 26-207) expressed in E. Coli.
Mol wt	93.2kDa
Species reactivity	Others
Clonality	Monoclonal
Recommended application	WB,IHC,FCM
Concentration	N/A
Full name	N/A
Synonyms	CDM;HCAD;LCAD;H-CAD;L-CAD;NAG22

This product is for research use only, not for use in human, therapeutic or diagnostic procedure.

Background

This gene encodes a calmodulin- and actin-binding protein that plays an essential role in the regulation of smooth muscle and nonmuscle contraction. The conserved domain of this protein possesses the binding activities to Ca(2+)-calmodulin, actin, tropomyosin, myosin, and phospholipids. This protein is a potent inhibitor of the actin-tropomyosin activated myosin MgATPase, and serves as a mediating factor for Ca(2+)-dependent inhibition of smooth muscle contraction. Alternative splicing of this gene results in multiple transcript variants encoding distinct isoforms. [provided by RefSeq, Jul 2008]

Recommended Dilution

WB: 1:500 - 1:2000

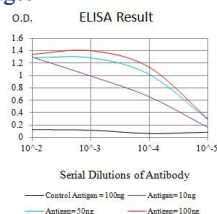
IHC-p: 1:200 - 1:1000

FCM: 1:200 - 1:400

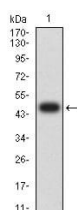
ELISA: 1:10000

Not yet tested in other applications.

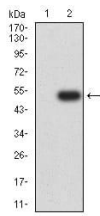
Images



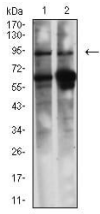
Black line: Control Antigen (100 ng);Purple line: Antigen (10ng); Blue line: Antigen (50 ng); Red line:Antigen (100 ng)



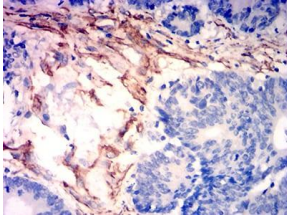
Western blot analysis using CALD1 mAb against human CALD1 (AA: 26-207) recombinant protein. (Expected MW is 47.6 kDa)



Western blot analysis using CALD1 mAb against HEK293 (1) and CALD1 (AA: 26-207)-hlgGFc transfected HEK293 (2) cell lysate.



Western blot analysis using CALD1 mouse mAb against NIH/3T3 (1) and C6 (2) cell lysate.



Immunohistochemical analysis of paraffin-embedded bladder cancer tissues using CALD1 mouse mAb with DAB staining.

Storage

Store at 4°C short term. Aliquot and store at -20°C long term.

501 Changsheng S Rd, Nanhu Dist, Jiaxing, Zhejiang, China

Tel: 86 21 31007137 | E-mail: save@bt-laboratory.com | www.bt-laboratory.com