

S100A4 Monoclonal Antibody

Description

Product type	Antibody
Code	BT-MCA2105
Host	Mouse
Isotype	Mouse IgG1
Size	100μL, 50μL
Immunogen	Purified recombinant fragment of human S100A4 (AA: 2-101) expressed in E. Coli.
Mol wt	11.7kDa
Species reactivity	Human,Mouse,Rat
Clonality	Monoclonal
Recommended application	IHC,FCM
Concentration	N/A
Full name	N/A
Synonyms	42A;18A2;CAPL;FSP1;MTS1;P9KA;PEL98

This product is for research use only, not for use in human, therapeutic or diagnostic procedure.

Background

The protein encoded by this gene is a member of the S100 family of proteins containing 2 EF-hand calcium-binding motifs. S100 proteins are localized in the cytoplasm and/or nucleus of a wide range of cells, and involved in the regulation of a number of cellular processes such as cell cycle progression and differentiation. S100 genes include at least 13 members which are located as a cluster on chromosome 1q21. This protein may function in motility, invasion, and tubulin polymerization. Chromosomal rearrangements and altered expression of this gene have been implicated in tumor metastasis. Multiple alternatively spliced variants, encoding the same protein, have been identified.

Recommended Dilution

WB: 1:500 - 1:2000

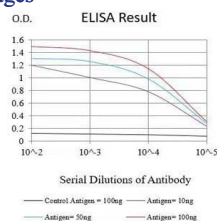
IHC-p: 1:200 - 1:1000

FCM: 1:200 - 1:400

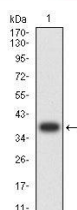
ELISA: 1:10000

Not yet tested in other applications.

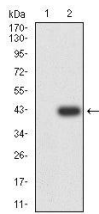
Images



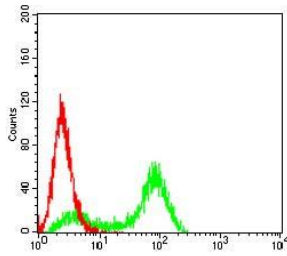
Black line: Control Antigen (100 ng);Purple line: Antigen (10ng); Blue line: Antigen (50 ng); Red line:Antigen (100 ng)



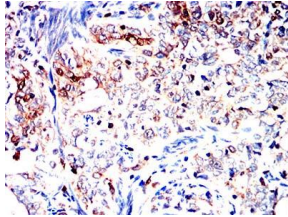
Western blot analysis using S100A4 mAb against human S100A4 (AA: 2-101) recombinant protein. (Expected MW is 37.5 kDa)



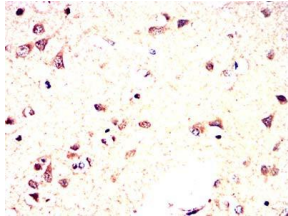
Western blot analysis using S100A4 mAb against HEK293-6e (1) and S100A4 (AA: 2-101)-hlgGfc transfected HEK293-6e (2) cell lysate.



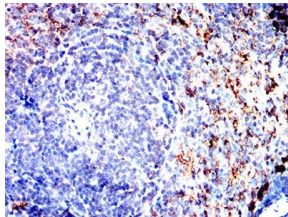
Flow cytometric analysis of Hela cells using S100A4 mouse mAb (green) and negative control (red).



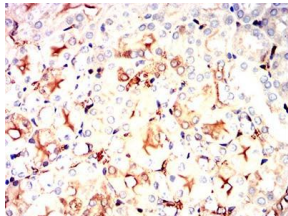
Immunohistochemical analysis of paraffin-embedded cervical cancer tissues using S100A4 mouse mAb with DAB staining.



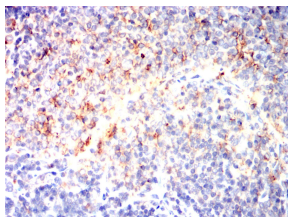
Immunohistochemical analysis of paraffin-embedded human brain tissues using S100A4 mouse mAb with DAB staining.



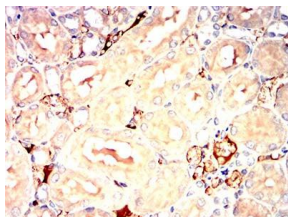
Immunohistochemical analysis of paraffin-embedded mouse spleen tissues using S100A4 mouse mAb with DAB staining.



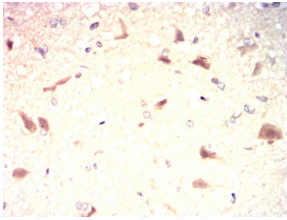
Immunohistochemical analysis of paraffin-embedded mouse kidney tissues using S100A4 mouse mAb with DAB staining.



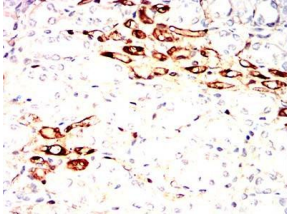
Immunohistochemical analysis of paraffin-embedded rat spleen tissues using S100A4 mouse mAb with DAB staining.



Immunohistochemical analysis of paraffin-embedded rat kidney tissues using S100A4 mouse mAb with DAB staining.



Immunohistochemical analysis of paraffin-embedded rabbit brain tissues using S100A4 mouse mAb with DAB staining.



Immunohistochemical analysis of paraffin-embedded rabbit kidney tissues using S100A4 mouse mAb with DAB staining.

Storage

Store at 4°C short term. Aliquot and store at -20°C long term.

501 Changsheng S Rd, Nanhu Dist, Jiaxing, Zhejiang, China

Tel: 86 21 31007137 | E-mail: save@bt-laboratory.com | www.bt-laboratory.com