

COL3A1 Monoclonal Antibody

Description

Product type	Antibody
Code	BT-MCA2118
Host	Mouse
Isotype	Mouse IgG1
Size	100µL, 50µL
Immunogen	Purified recombinant fragment of human COL3A1 (AA: 24-153) expressed in E. Coli.
Mol wt	138.6kDa
Species reactivity	Others
Clonality	Monoclonal
Recommended application	IHC,FCM
Concentration	N/A
Full name	N/A
Synonyms	EDS4A;EDSVASC;PMGEDSV

This product is for research use only, not for use in human, therapeutic or diagnostic procedure.

Background

This gene encodes the pro-alpha chains of type III collagen, a fibrillar collagen that is found in extensible connective tissues such as skin, lung, uterus, intestine and the vascular system, frequently in association with type I collagen. Mutations in this gene are associated with Ehlers-Danlos syndrome types IV, and with aortic and arterial aneurysms. Two transcripts, resulting from the use of alternate polyadenylation signals, have been identified for this gene.

Recommended Dilution

WB: 1:500 - 1:2000

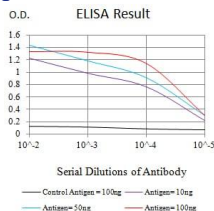
IHC-p: 1:200 - 1:1000

FCM: 1:200 - 1:400

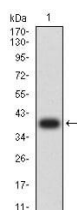
ELISA: 1:10000

Not yet tested in other applications.

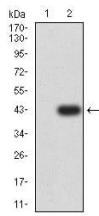
Images



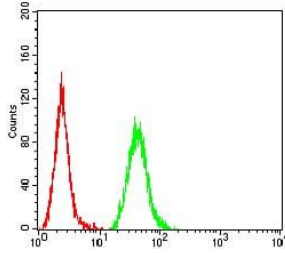
Black line: Control Antigen (100 ng);Purple line: Antigen (10ng); Blue line: Antigen (50 ng); Red line:Antigen (100 ng)



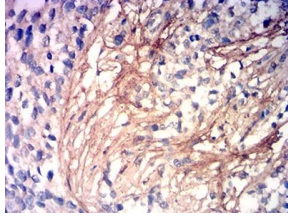
Western blot analysis using COL3A1 mAb against human COL3A1 (AA: 24-153) recombinant protein. (Expected MW is 39.2 kDa)



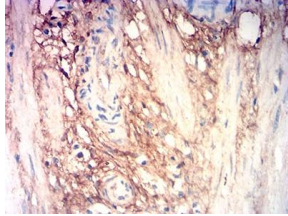
Western blot analysis using COL3A1 mAb against HEK2993 (1) and COL3A1 (AA: 24-153)-hlgGfc transfected HEK2993 (2) cell lysate.



Flow cytometric analysis of HeLa cells using COL3A1 mouse mAb (green) and negative control (red).



Immunohistochemical analysis of paraffin-embedded cervical cancer tissues using COL3A1 mouse mAb with DAB staining.



Immunohistochemical analysis of paraffin-embedded stomach cancer tissues using COL3A1 mouse mAb with DAB staining.

Storage

Store at 4°C short term. Aliquot and store at -20°C long term.

501 Changsheng S Rd, Nanhu Dist, Jiaxing, Zhejiang, China

Tel: 86 21 31007137 | E-mail: save@bt-laboratory.com | www.bt-laboratory.com