

IGF2BP3 Monoclonal Antibody

Description

Product type	Antibody
Code	BT-MCA2129
Host	Mouse
Isotype	Mouse IgG1
Size	100µL, 50µL
Immunogen	Purified recombinant fragment of human IGF2BP3 (AA: 430-579) expressed in E. Coli.
Mol wt	63.7kDa
Species reactivity	Others
Clonality	Monoclonal
Recommended application	WB,IHC,FCM
Concentration	N/A
Full name	N/A
Synonyms	KOC;CT98;IMP3;KOC1;IMP-3;VICKZ3

This product is for research use only, not for use in human, therapeutic or diagnostic procedure.

Background

The protein encoded by this gene is primarily found in the nucleolus, where it can bind to the 5' UTR of the insulin-like growth factor II leader 3 mRNA and may repress translation of insulin-like growth factor II during late development. The encoded protein contains several KH domains, which are important in RNA binding and are known to be involved in RNA synthesis and metabolism. A pseudogene exists on chromosome 7, and there are putative pseudogenes on other chromosomes.

Recommended Dilution

WB: 1:500 - 1:2000

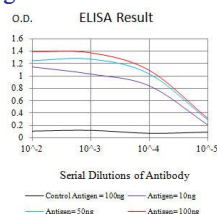
IHC-p: 1:200-1:1000

FCM: 1:200-1:400

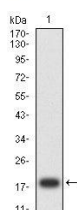
ELISA: 1:10000

Not yet tested in other applications.

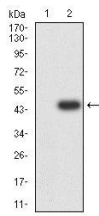
Images



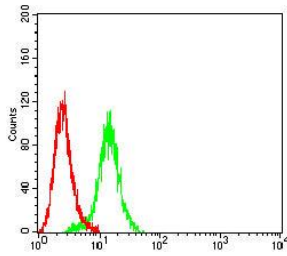
Black line: Control Antigen (100 ng);Purple line: Antigen (10ng); Blue line: Antigen (50 ng); Red line: Antigen (100 ng)



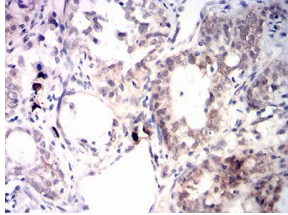
Western blot analysis using IGF2BP3 mAb against human IGF2BP3 (AA: 430-579) recombinant protein. (Expected MW is 19.4 kDa)



Western blot analysis using IGF2BP3 mAb against HEK293 (1) and IGF2BP3 (AA: 430-579)-hIgGFc transfected HEK293 (2) cell lysate.



Flow cytometric analysis of HeLa cells using IGF2BP3 mouse mAb (green) and negative control (red).



Immunohistochemical analysis of paraffin-embedded cervical cancer tissues using IGF2BP3 mouse mAb with DAB staining.

Storage

Store at 4°C short term. Aliquot and store at -20°C long term.

501 Changsheng S Rd, Nanhu Dist, Jiaxing, Zhejiang, China

Tel: 86 21 31007137 | E-mail: save@bt-laboratory.com | www.bt-laboratory.com