

CBX1 Monoclonal Antibody

Description

| | |
|--------------------------------|---|
| Product type | Antibody |
| Code | BT-MCA2148 |
| Host | Mouse |
| Isotype | Mouse IgG1 |
| Size | 100µL, 50µL |
| Immunogen | Purified recombinant fragment of human CBX1 (AA: 1-185) expressed in E. Coli. |
| Mol wt | 21.4kDa |
| Species reactivity | Human |
| Clonality | Monoclonal |
| Recommended application | IHC,ICC,FCM |
| Concentration | N/A |
| Full name | N/A |
| Synonyms | CBX;M31;MOD1;p25beta;HP1-BETA;HP1Hsbeta;HP1Hs-beta |

This product is for research use only, not for use in human, therapeutic or diagnostic procedure.

Background

N/A

Recommended Dilution

WB: 1:500 - 1:2000

IHC-p: 1:200 - 1:1000

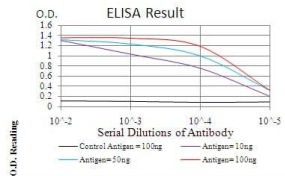
ICC: 1:200 - 1:1000

FCM: 1:200 - 1:400

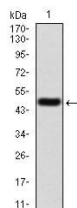
ELISA: 1:10000

Not yet tested in other applications.

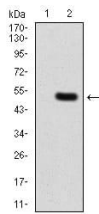
Images



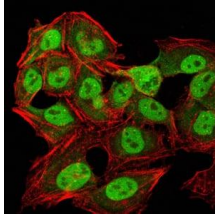
Black line: Control Antigen (100 ng); Purple line: Antigen(10ng); Blue line: Antigen (50 ng); Red line: Antigen (100 ng);



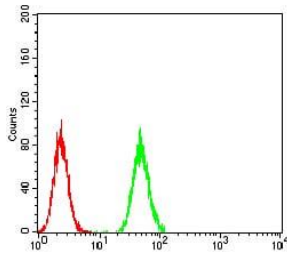
Western blot analysis using CBX1 mAb against human CBX1 (AA: 1-185) recombinant protein. (Expected MW is 47.3 kDa)



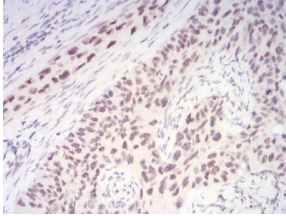
Western blot analysis using CBX1 mAb against HEK293 (1) and CBX1 (AA: 1-185)-hIgGFc transfected HEK293 (2) cell lysate.



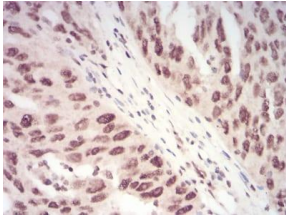
Immunofluorescence analysis of HeLa cells using CBX1 mouse mAb (green). Blue: DRAQ5 fluorescent DNA dye. Red: Actin filaments have been labeled with Alexa Fluor-555 phalloidin. Secondary antibody from Fisher (Cat#: 35503)



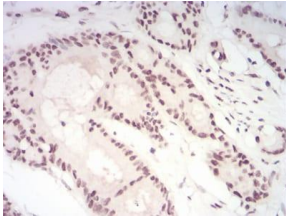
Flow cytometric analysis of HeLa cells using CBX1 mouse mAb (green) and negative control (red).



Immunohistochemical analysis of paraffin-embedded cervical cancer tissues using CBX1 mouse mAb with DAB staining.



Immunohistochemical analysis of paraffin-embedded ovarian cancer tissues using CBX1 mouse mAb with DAB staining.



Immunohistochemical analysis of paraffin-embedded colon cancer tissues using CBX1 mouse mAb with DAB staining.

Storage

Store at 4°C short term. Aliquot and store at -20°C long term.

501 Changsheng S Rd, Nanhu Dist, Jiaxing, Zhejiang, China

Tel: 86 21 31007137 | E-mail: save@bt-laboratory.com | www.bt-laboratory.com