

MYCN Monoclonal Antibody

Description

Product type	Antibody
Code	BT-MCA2152
Host	Mouse
Isotype	Mouse IgG1
Size	100µL, 50µL
Immunogen	Purified recombinant fragment of human MYCN (AA: 337-464) expressed in E. Coli.
Mol wt	49.5kDa
Species reactivity	Others
Clonality	Monoclonal
Recommended application	IHC,FCM
Concentration	N/A
Full name	N/A
Synonyms	NMYC;ODED;MODED;N-myc;bHLHe37

This product is for research use only, not for use in human, therapeutic or diagnostic procedure.

Background

This gene is a member of the MYC family and encodes a protein with a basic helix-loop-helix (bHLH) domain. This protein is located in the nucleus and must dimerize with another bHLH protein in order to bind DNA. Amplification of this gene is associated with a variety of tumors, most notably neuroblastomas. Multiple alternatively spliced transcript variants encoding different isoforms have been found for this gene.

Recommended Dilution

WB: 1:500 - 1:2000

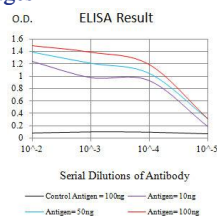
IHC-p: 1:200-1:1000

FCM: 1:200-1:400

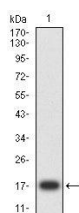
ELISA: 1:10000

Not yet tested in other applications.

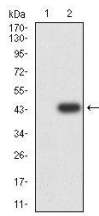
Images



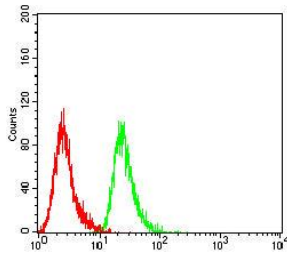
Black line: Control Antigen (100 ng);Purple line: Antigen (10ng); Blue line: Antigen (50 ng); Red line: Antigen (100 ng)



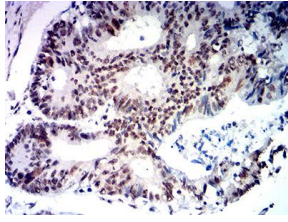
Western blot analysis using MYCN mAb against human MYCN (AA: 337-464) recombinant protein. (Expected MW is 17.7 kDa)



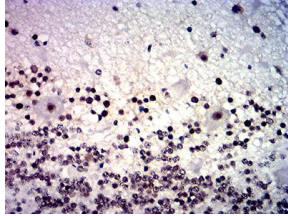
Western blot analysis using MYCN mAb against HEK2993 (1) and MYCN (AA: 337-464)-hlgGFc transfected HEK2993 (2) cell lysate.



Flow cytometric analysis of HeLa cells using MYCN mouse mAb (green) and negative control (red).



Immunohistochemical analysis of paraffin-embedded colon cancer tissues using MYCN mouse mAb with DAB staining.



Immunohistochemical analysis of paraffin-embedded cerebellum tissues using MYCN mouse mAb with DAB staining.

Storage

Store at 4°C short term. Aliquot and store at -20°C long term.

501 Changsheng S Rd, Nanhu Dist, Jiaxing, Zhejiang, China

Tel: 86 21 31007137 | E-mail: save@bt-laboratory.com | www.bt-laboratory.com